

### "Jammin' Shabbat on the Hill"

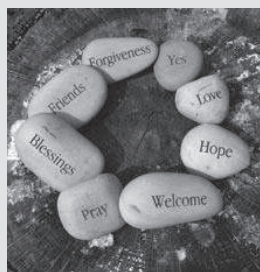
Friday, July 11, 2014 -  
6:00 pm

Outdoor Potluck Dairy  
Supper to follow

Join us for a musically spontaneous  
Kabbalat Shabbat Service.  
See page 8 for more information  
and registration form.



Menu: Hamburgers, Hot Dogs, Veggie Burgers, Sides & Dessert  
See page 10 for more information and registration form.



### TEFILAT REFUAT HANEFESH Prayers to Heal the Soul

Monday, July 14 at 5:30 pm &  
Thursday, August 14 at 6:30 pm

A service of reflection, words and music for Healing the Soul

**"Bless Those In Need of Healing with Refuah Shlemah..."**  
*In the natural setting of the Aaron Gabay Children's Garden*

For more information see page 9.

### TISHA B'AV SERVICES

Monday, August 4, 2014  
Fast begins 8:28 pm  
Erev Tisha B'Av  
8:30 pm in the Chapel

Tuesday, August 5, 2013  
Tisha B'Av - Fast of the 9th of Av  
7:15 am Morning Minyan  
2:00 pm Early Mincha Service  
(with Tallit and Tefilin)  
8:30 pm Ma'ariv  
Fast ends 9:00 pm

### Table Of Contents

Page			
2.	Temple Beth El Mission, Vision and Values	6	Keshet & USY
	President's Message	7.	Articles
3.	From Our Senior Rabbi	8.	Jammin' Shabbat
	Notes From Our Hazzan	9.	Tefilat Refuat Hanefesh
4.	From the Associate Rabbi		Prayers to Heal the Soul
	Religious School Corner	10.	BBQ Dinner & Joint
5.	B'nei Mitzvah, Mazal		Service with TBK
	Tovs, Kol HaKavod	12	Selichot
	& Pictures	13.	Articles
		14.	TBE Events Pictures
		15.	Articles
		16.	Condolences & Article
		17.	Men's Club & Sisterhood
		18.	Articles
		19.	Donations
		20.	Donations
		21.	Yahrzeits
		22.	Yahrzeits & Article
		23.	Calendar
		24.	Officers & Staff

### Weekly Services

#### Shacharit:

Sunday:	8:30 am
Monday-Friday:	7:30 am
Rosh Hodesh:	7:15 am
Shabbat	9:00 am
Secular Holidays	8:30 am

#### Mincha/Ma'ariv:

Sunday-Friday	6:00 pm
---------------	---------

# Temple Beth El

## Mission Statement

Temple Beth El is a vibrant and inclusive community of Jews who join together for prayer, education, celebration, mutual support and comfort, tikkun olam and acts of loving kindness. We are guided by Torah and the principles of the Conservative movement. We are committed to our community, the State of Israel, and Jews around the world.

## Vision Statement

Our vision is that Temple Beth El will be an inspiring center of Conservative Judaism in which meaningful experiences and memories take root and grow.

## Values Statement

We are a welcoming and inclusive congregation.

We value and respect each congregant and his or her personal journey in Judaism.

We foster a sense of connectedness with our community.

We value participation in all aspects of synagogue and Jewish life.

Our congregation will be here for the entire Temple family now and for future generations.

**Welcome to our house.**



## **PRESIDENT'S MESSAGE**

It is my pleasure to begin my term as President of Temple Beth El by introducing the newest member of our Senior Staff, our new Director of Youth and Family Education, Samara Sofian. Samara comes to us from Congregation Beth Israel Ner Tamid in Milwaukee, WI, where she served as Principal of the Religious School and Director of Life Long Jewish Learning and Programming for the past 10 years. In addition to a BA in Jewish Letters, a Master's Degree in Education, and an MBA in Non-Profit Management from the University of Judaism, Samara has a BA in History from Ithaca College. She is currently serving as a Vice President of the Jewish Educators Assembly. Our search committee conducted an intensive national search to identify the best candidate for this position and they have succeeded. Many thanks to Lisa Silverstein and Susan Trumble, our co-chairs, and the entire committee. Let's all welcome Samara, her husband, Josh, and her 3 children: Nadav, Ziva, and Orly, to our TBE community.

It is no secret that Religious Schools across the country are struggling. Despite the hard work of dedicated teachers and Rabbis, we are having difficulty transmitting our love of life long Jewish learning and living to our children. In the face of the many challenges created by our rapidly changing secular society, our schools have often remained static, seemingly unchanged from the schools many of us attended decades ago.

In response to these challenges new and exciting educational models are being experimented with all across the country. Our goal is not to teach our children "about Judaism" but to live as Jews, so many of these models are incorporating a more experiential approach. The technology that our children have grown up with can become a powerful tool in their Jewish education. This is truly an exciting time in Jewish Education and Temple Beth El is committed to being part of this grand experiment.

So what can each one of you do to help? How can every member of Temple Beth El participate in re-imagining our Religious School?

Over the summer and during the next year, we will be having small group meetings with students, parents, teachers, and anyone interested in the education of our children, so that Samara can learn what our goals and interests are. We need to create a shared vision for our Religious School. Success can only be achieved through the collaborative efforts of all of us. So come and be a part of the conversation.

The Rambam begins his Laws of Torah Study, not with the obligation to learn Torah, but to teach it to our children. We have added an innovative, experienced leader to our already great team of teachers to help us educate our children. However, we need to remember that the obligation is ours. WE need to inspire our children to learn, WE need to give them their "Jewish Identity".

Let me close by thanking all of you for the honor of being President of Temple Beth El. I came to Rochester from Brooklyn as a freshman at the University of Rochester in 1973. I could never have imagined that 40 years later my Jewish journey would take me just a few miles up the road to serve this wonderful congregation. This is an exciting time for Temple Beth El. The energy is palpable. Come join us!

B'Shalom and have a great summer,  
Dan Glowinsky  
President



## FROM THE DESK OF THE SENIOR RABBI

“My house shall be called a house of prayer for all peoples” is a verse taken from chapter 56, verse 7 of the Book of Isaiah. Usually written on synagogue buildings, engraved in their doorposts, Isaiah’s verse conveys an important message, i.e. we welcome all Jews and non-Jews into our midst! In other words, we invite and greet every visitor/worshiper to enter our synagogue and partake of our spiritual journey we offer at our daily Minyan and at every Shabbat and Festival through the year. Does it really happen this way? Are there any obstacles people find that preclude our worshipers enjoying services? I am sure there are. I want you to know we have embarked on a plan to recognize our ever-changing congregational composition. As a token of our new approach to services and synagogue we had in June our first FAMILY SHABBAT SERVICE UNDER THE SKY, to welcome those of ALL abilities.

I was reminded of this particular verse from Isaiah, as I participated, years ago, in the Tiferet Conference. This conference was an effort brought to the Conservative Movement by the Federation of Jewish Men’s Clubs and the Tiferet Project to consider the practical and theoretical issues taking place in our members’ households as a result of the changing Jewish family. Thirty rabbis from all over the country and ten lay people from our synagogues explored in an open and inspired fashion the practical and halachic (Jewish legal) aspects of a newly thought-out approach to family with all different kinds of children, and to intermarriage. The aim is to encourage everyone in the synagogue to be more welcoming and to open our services to help our diverse population.

At Temple Beth El, we are committed to explore creative, practical approaches to Jewish issues pertaining to all the different family configurations and intermarried households we come in contact with. The lay leaders are committed to helping the clergy of the synagogue to approach this issue with sensitivity and put together an agenda of action in our Temple, our FAMILY SHABBAT SERVICE UNDER THE SKY, was one of our first strategies. Through the summer we will have Friday night services with other synagogues and healing services as well.

It behooves us to find an ethical and compassionate response to the social and demographic realities of our Jewish community. The spiritual and moral character of our Temple will be deeply affected and enriched by forward thinking.

Isaiah’s statement “My house shall be called a house of prayer for all peoples” becomes more and more relevant in our days. To make everyone, Jewish and the intermarried families, feel welcome in our synagogue we must show knowledge of scripture, as well as wisdom and courage. We welcome the challenge to rethink our position toward our current and future members and I welcome your input as we begin formulating Temple Beth El’s plan to welcome the ever-changing Jewish family/household in America.

B’Shalom,  
Rabbi Leonardo Bitran



## NOTES FROM OUR HAZZAN...

We continue to offer a varied array of both services and programming which we hope you will find to be attractive and engaging regardless of background or age.

As an example, I was pleased with the response to our Tikkun Leil Shavuot, our all-night session of study on the first evening of the holiday. I led two sessions...the first on Torah reading using colors and techniques that I have found to be effective. The premise is simply that you can learn to read Torah from knowing some basic and familiar texts. All that you need to add is practice. I believe that those in attendance gained confidence in their ability to prepare short aliyot from the Torah. I hope to continue this course in the fall and as a result, add to the number of our Yad Squad cadre of readers. Please watch for further details.

I also taught a session of Prayer Melodies which explored the correct manner in which to conduct daily and Shabbat services. As an added resource, I provided a CD of several blessings and sections of the amidah. If you would like a copy of the CD and hand-out, just let me know.

I hope that you were with us for our annual Friday Night Jazz, featuring Mr. Gap Mangione. Together with our other musicians he helped to offer a unique musical approach to our liturgy. Many thanks to him as well as all those who contributed to making the evening the success that it truly was.

The summer months provide us time to prepare additional creative programming. The month of July will feature a “Jammin’ Shabbat”, which will feature three or four instrumentalists in a rather “improv”, or musically spontaneous Friday evening service. I hope that you will join us this service.

As summer has a habit of fleeting, we are already making preliminary plans for Selihot, which, this year will take place on Saturday evening, September 20<sup>th</sup> and offer a totally new and exciting musical concept. I have arranged with the Penfield Symphony Orchestra, numbering over forty-five instrumentalists and under the baton of Dr. David Harmon, our Selihot string quartet, featuring some of our community’s finest classical musicians and our High Holiday choir to join us in the solemn Selihot Service. Many of the details are not quite set, but this should prove to be one of Temple Beth El’s musical highlights of the past several years! Again, please watch our upcoming publicity for more information.

Finally, I would like to encourage you to be with us for both Friday evening, Shabbat Morning, and weekday services throughout the summer. We sometimes need help in providing a Minyan for those who need to recite Kaddish.

If there is any way in which I can be of assistance to you, please do not hesitate to contact me.

Warmly,  
Hazzan Martin Leubitz





## FROM THE DESK OF THE ASSOCIATE RABBI

I write this shortly after the Rolling Stones' concert in Jerusalem in early June. Pressured by anti-Israel activists, not only did the Stones play, but they also pushed back the start time of the concert so that it would begin on Saturday night after Shabbat ended and Mick Jagger spoke at least a dozen Hebrew phrases during the concert to the delighted roar of the crowd. This pro-Israel sentiment stands out in a climate that has become increasingly hostile to Israel.

The Boycott/Divest/Sanctions (BDS) Movement against Israel was formally launched in 2005, and it has gained steam in recent years. BDS claims to be a peaceful movement whose goal is to use "punitive economic means" to pressure Israel on human rights issues in the Palestinian territories. In reality, BDS is anything but pro-peace, as its anti-Israel and anti-Semitic rhetoric seeks to demonize and delegitimize Israel and it pushes for a one state solution to the Israeli/Palestinian conflict. The problem, of course, with this one state solution is that it means the end of Israel.

The BDS movement is quite active on college campuses. While most students support a negotiated two-state solution to the Arab-Israeli conflict, several groups regularly use campuses as a forum to promote policies that demonize and delegitimize the Jewish State. From resolutions, to anti-Israel conferences and annual "Israeli Apartheid Week" events, these occurrences not only undermine Israel's right to exist, but threaten real chances for peace.

According to the Simon Wiesenthal Center, BDS' true essence matches Natan Sharansky's "three Ds" test for when legitimate criticism crosses the line into anti-Semitism: **Double Standards** - singling out Israel for criticism while ignoring the more egregious behavior of major human rights abusers in the Arab and Muslim world and beyond; **Demonization of Israel** - distorting the Jewish State's actions by means of insidious and false comparisons with the Nazis and/or South Africa's Apartheid regime; and **Delegitimization** - when Israel's fundamental right to exist is denied - alone among all nations in the world - this too is anti-Semitism.

For example, BDS claims to be peaceful or to favor "nonviolent punitive measures," but does not denounce anti-Israel, anti-Jewish violence. The movement frequently downplays its programmatic commitment to the unlimited "right of return" of millions of Palestinians, not born in Israel but claiming refugee status that would spell the end of the Jewish State. Additionally, BDS slanders Zionism and supporters of the Jewish State by falsifying the profound differences between Apartheid South Africa and democratic Israel.

Israeli Prime Minister Benjamin Netanyahu said at the AIPAC 2014 Policy Conference, "BDS is bad for peace and it is just plain wrong. It is morally wrong, BDS stands for bigotry, dishonesty and shame. Those who oppose BDS, like Scarlett Johansson (who refused to bow down to pressure for her role as spokeswoman of Israeli company SodaStream), should be applauded."

The American Jewish community has a responsibility to engage in dialogue about Israel, not shying away from difficult or uncomfortable conversation. As U.S. Supreme Court Justice Louis D. Brandeis wrote, "Truth is the best disinfectant." We should show our economic support of Israel in an attempt to counteract the harm that BDS activists seek to inflict. If you would like to learn more, please visit the Simon Wiesenthal Center (Wiesenthal.com) or the Anti-Defamation League (adl.org).

B'Shalom,  
Rabbi Sarah Freidson-King



## RELIGIOUS SCHOOL CORNER

I am thrilled to be joining the Temple Beth El community as the Youth and Family Education Director! I'd like to take this opportunity to introduce myself and tell you a little bit about my background.

I grew up on a horse farm outside Lancaster, Pennsylvania. As a child and teen, I was very involved in 4H and USY. I attended Ithaca College, where I earned a BA in History. During college, I spent a semester studying at Tel Aviv University. Following that experience, I became a Hebrew teaching assistant at Ithaca College and started to work for Hillel providing programming to students living off-campus. After college I studied in a Kibbutz Upland program in Northern Israel. I then attended the American Jewish University where I earned an MA in Jewish Education and an MBA with a focus on non-profit management. My family and I come to Rochester from Milwaukee, WI where I served as the Director of Life Long Jewish Learning and Programming at Congregation Beth Israel Ner Tamid for nine years.

My husband, Josh, and I have three children. Nadav is almost 6, Ziva is 3 ½ and Orly is 1 ½. I am excited for Ziva and Orly to join TBE's Keshet preschool program in the fall and for Nadav to join the 1<sup>st</sup> grade religious school class. As a family we love playing outside (in warm weather and in the snow), cooking, hosting others for Shabbat dinners and exploring new places. I also really enjoy gardening, riding horses and reading.

It is my goal as the Youth and Family Education Director to work towards inspiring a love of Jewish learning and living among children and families. I strongly feel that Jewish education should be both meaningful and enjoyable. One of my favorite aspects of this work is helping children develop a lasting connection to their faith and community. I look forward to working with the teachers and families in the school to build a vibrant education program that the students enjoy attending. I also look forward to creating enriching family programming and to helping the youth groups continue their great programming.

I keep an open door policy. Please feel free to come by my office, give me a call at the synagogue or send me an email at [ssofian@tberochester.org](mailto:ssofian@tberochester.org). I look forward to meeting and speaking with all of you.

B'Shalom,  
Samara Sofian



Rabbi Freidson-King teaching about Shavuot at Keshet.

# Mazal Tov

## B'NEI MITZVAH

**Shira Ariel Silverstein**  
**August 30, 2014**

**Daughter of:** Lisa & Michael Silverstein  
**Sister of:** Gabrielle Silverstein  
**Granddaughter of:** Fredda & Peter Silverstein and Paulette & Harvey Sonnenstein

Shira is an 8<sup>th</sup> grader at Honeoye Falls-Lima Middle School this year. She loves to sing, play volleyball and watch movies. As part of her Bat Mitzvah project, she created a website - shirasark.org - to help make people aware of the welfare of animals and support Wild Wings in Mendon Ponds Park. She is excited to celebrate her Bat Mitzvah with her family and friends.



### ENGAGEMENT & MARRIAGE

Mazal Tov to Ellen & Charles Konar on the engagement of their son, Stephen Konar to Jessica Yorra. And Mazal Tov to Jessica's parents, Nancy & Mark Yorra of Brookline, MA, and to grandparents Millie Rosen & Leon Rosen, z'l; Norma & Harry Konar, z'l; Helaine Gamer, z'l & Fred Gamer and Helen & Alvin Yorra.

Mazal Tov to Cheryl Kovalsky and David Fenig on their marriage Sunday, May 25, 2014. And Mazal Tov to Sharon Kovalsky and Arnold Kovalsky, parents of the bride and Susan & Stuart Fenig of New City, NY, parents of the groom.

Mazal Tov to Ilana Goldowitz and Jorge Jimenez on their marriage Sunday, May 25, 2014. And Mazal Tov to Deborah & Joshua Goldowitz, parents of the bride and Blanca Jimenez, mother of the groom, Daniel Goldowitz, brother of the bride and Anthony & Alfonso Jimenez, brothers of the groom.

Mazal Tov to Joshua Obront and Katrina Doucett on their upcoming marriage in Toronto Thursday, July 10, 2014. And Mazal Tov to Lynda & Ron Axelrod, parents of the groom; and to T'Mahry Axelrod, Abe Axelrod, z'l, Dorothy & Jerry Sadick, z'l, grandparents of the groom.

Mazal Tov to Taylor L. Mondshine & Joshua S. Futerman on their marriage Sunday, June 29, 2014. And Mazal Tov to Peggy & Eli Futerman, parents of the groom and Randi & Evan Mondshine, parents of the bride; Sara Futerman & Michael Futerman, z'l, and Lenore & Eugene Lerner, grandparents of the groom and Annette & Fred Geller, z'l and Sarah Mondshine, z'l & Stanley Mondshine, grandparents of the groom; Aviva & Arie Schochat, sister & brother-in-law of the groom and Janine & Ross Mondshine and Ellen & Justin Mondshine, sister-in-laws & brothers of the bride.

### Kol HaKavod to:

Benjamin Chartock, grandson of Bradleigh & Mordecai Kolko,  
 for graduating from Cornell University with a B.A. in  
 Economics, Magna Cum Laude.

### New Baby!

Mazal Tov to Roberta & Malcolm Savedoff on the birth of their great-granddaughter Calliope Rose Donforth on May 10, 2014.

And Mazal Tov to the parents, Sophia & Luke Donforth and to the grandparents, William Savedoff and Amy Smith and Stefan & Mary Donev.

Mazal Tov to Steven & Barbara Boyar Schron on the birth of their grandson, Cooper Jameson Christian on May 18, 2014.

And Mazal Tov to parents PJ & Jessica Schron Christian; grandparents Ruth & Paul Christian and great-grandparents Evelyn & Martin Schron and Ruth & Reuben Boyar, z'l.

Mazal Tov to Cypora & Uszer Teigman on the birth of their granddaughter Ellie Rachel Teigman on May 31, 2014.

And Mazal Tov to the parents, Jennifer & Alan Teigman; grandparents, Linda & Al Frank; great-grandparents Sara & Herman Kutner, Hilda & Harry Frank, z'l, Ethel & Martin Kazen, z'l and Rachel & Chiel Teigman, z'l.

Mazal Tov to Sue Ann Baker and Robert Baker, z'l on the birth of their grandson Isaac Jonas Baker on May 27, 2014.

And Mazal Tov to the parents, Michelle & Aaron Baker and grandparents, Kathy & Earl Lubitow.

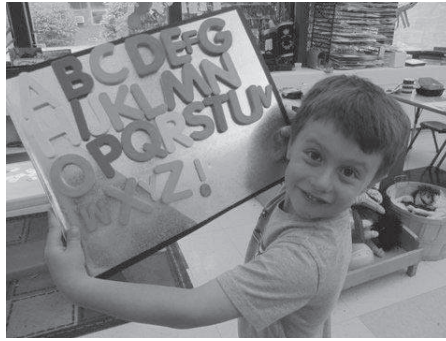
Mazal Tov to Megan & Greg Pheterson on the birth of their daughter Juliet Elizabeth Pheterson on June 5, 2014.

And Mazal Tov to big brother Eli Pheterson; to grandparents, Steve & Roberta Pheterson and Robert Seely & Sandy Hoff and great-grandmother Esther Smalline.



Hope Kantor, Melinda Yanoff & Orna Korn, recipients of the Jan Katz Grinspoon Award for Excellence in Jewish Education





Keshet is about learning, growing, pride in oneself, pride in Jewish values, having fun and making friends.

There are still a few openings in our Fall 2014 classes... please join us!



We're expecting another WONDERFUL year ahead!

Call Randi or Michelle at 473-1190 for information & a personal tour!



New Chapter Board:  
Sarah Cline, Lauren Reiner,  
Spencer Ressel, Tamar Feldman  
and Jacob Eckhaus

USY out going Chapter Board:  
Alex Kinel, Jessie Luxemburg,  
Matan Presberg, Rachel Federman,  
Sydney Gray, Allison Plotnik,  
Avi Presberg and  
advisor Leah Friedman





**WE KNEAD YOU!!**  
*THE MAGIC OF BAKING CHALLAH –  
 SPREADING BLESSINGS IN ROCHESTER*  
 Just bring your apron, names of those  
 needing prayers and your warm  
 heart!

**Monthly Challah Baking at  
 Temple Beth El**  
 Thursday, July 31 at 11:00 am &  
 Thursday, August 28 at 6:00 pm &  
 Come bake challahs for your home,  
 temple or a friend!



TEMPLE  
*Beth El* 

**Community**  
**Garden**  גן קהילתי

  Made possible with the generous support of the Max and Marian Farash Charitable Foundation

### **Come Grow With Us**

Join us as we tend the new Temple Beth El Community Garden:

Wednesdays 9:00-11:00 a.m.

Sundays 9:00-11:00 a.m.

Wear gardening clothes. We have tools, but you're welcome to bring your own.

Harvests will be donated to families in need through Asbury Dining or the Brighton Food Cupboard.

Gardening is a great summer family activity, and a great way to make a difference. No prior experience necessary!

For more information, contact the temple office at: 473-1770.

**The Temple Beth El Community Garden ... You'll Dig It!**



# “Jammin’ Shabbat on the Hill”

Friday, July 11, 2014 - 6:00 pm

Outdoor Potluck Dairy  
Supper to follow

Join us for a musically spontaneous  
Kabbalat Shabbat Service. Bring a cold **DAIRY** or  
**VEGETARIAN** dish in a disposable container to share for  
Shabbat Dinner outdoors.

Paper goods and plastic utensils provided.  
Bring your own chairs and blankets.

Please return the form below, call the Temple office  
at 473-1770 or email Carol at  
[ckonuksever@tberochester.org](mailto:ckonuksever@tberochester.org) to let us know you are  
coming and what you would like to bring.

Name: \_\_\_\_\_

Phone: \_\_\_\_\_ Email: \_\_\_\_\_

Dish to Pass: \_\_\_\_\_

The kosher *hechshers* below are **NOT** accepted by TBE.





# ***TEFILAT REFUAT HANEFESH***

## **Prayers to Heal the Soul**

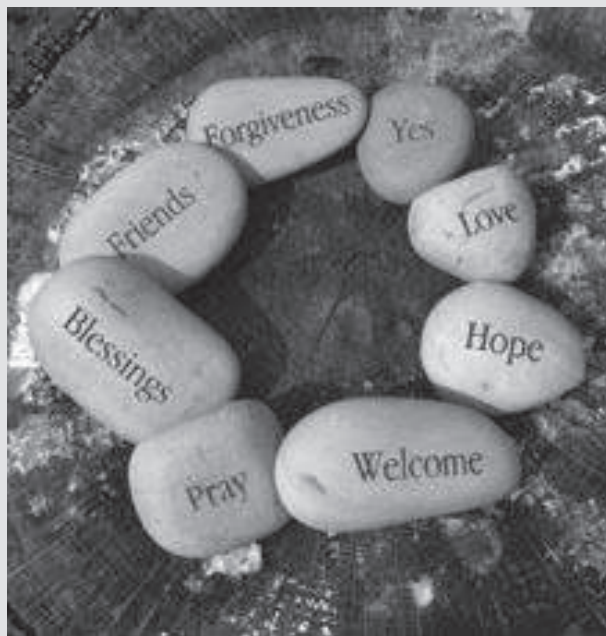
**Monday, July 14 at 5:30 pm &  
Thursday, August 14 at 6:30 pm**

A service of reflection, words and music for Healing the Soul

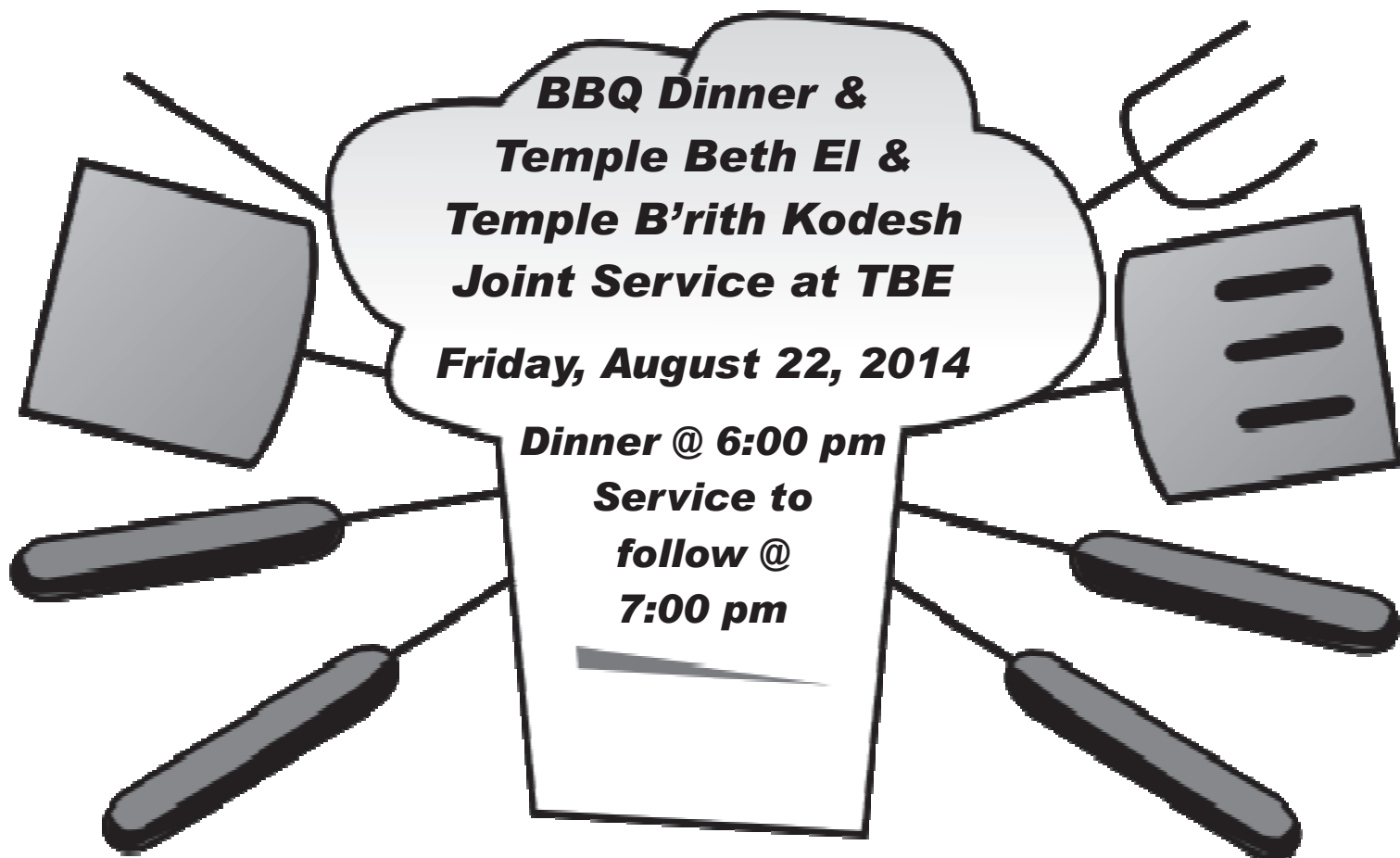
**“Bless Those In Need of Healing with Refuah Shlemah...”**

*In the natural setting of the Aaron Gabay Children’s Garden*

Throughout the ages Jews have offered prayers for the healing of the soul and for their body. Temple Beth El will hold this **Service of Healing** on a regular basis. Rabbi Bitran, Hazzan Leubitz and Rabbi Freidson-King will conduct a **one-hour service of music, readings and poetry to soothe the body and soul**. Guided meditation and relaxation techniques will also be utilized.



**Temple Beth El** invites the Jewish Community to its first **Service of Healing for the Body and Soul** to take place **outdoors** in the **Aaron Gabay Children’s Garden**.



Menu: Hamburgers, Hot Dogs, Veggie Burgers, Sides & Dessert



**Reservation for BBQ Dinner**

Please return this form with payment to the Temple Beth El office,  
239 Winton Road South, 585-473-1770, or pay online at [tberochester.org](http://tberochester.org)  
no later than **Monday, August 18, 2014**

Family Name: \_\_\_\_\_

Phone: \_\_\_\_\_ Email: \_\_\_\_\_

# attending

Total \$

\$10 Per Person (\$12 at the door) \_\_\_\_\_

Maximum cost per family household (residing at same address) is \$40.



Establishing a New Tradition



**BRIGHTON MEMORIAL CHAPEL, INC.**  
Rochester's Jewish Funeral Home

Graveside, Temple or Chapel Services.  
Now maintaining the PARSKY records.

**427-8520**

3325 Winton Road South  
www.BrightonMemorialChapel.com

## LIPMAN'S KOSHER MARKET

New York Style Deli

Platters for all Occasions • Certified Glatt Kosher  
1482 Monroe Ave., Rochester, NY • 585-271-7886  
Rochester's Original Since 1950

**ISAAC**  
Heating & Air Conditioning

When you need us, we'll be there. ®



**546-1400**

www.IsaacHeating.com



## All Things Antiques

Top \$\$\$ Paid For

Gold • Silver • Watches

Coins • Antiques • Military

Shop It 1st See Us Last For Your Best Price

Friendly House Calls

2788 Dewey Ave.

(4 Blocks south of Stone Rd.)

Estate/Household Sales

Estate Cleanout Services

**647-9320**

## Simon Plumbing & Electrical

Water Heaters • Sump Pumps • Toilets • Faucets  
Sinks • Garbage Disposals • Sewer & Drain  
Cleaning • Electrical & Plumbing Repairs  
FREE ESTIMATES/FULLY INSURED  
**WARREN S. SIMON 271-0190**

**John H. McGee & Son**  
MONUMENTS AND MARKERS



Serving the Jewish Community  
Proud of our Reputation

Visit our office or we will be happy  
to visit you at your home.

508 State Street • **546-4602**

**THE Ultimate**  
Bar/Bat Mitzvah

DJ entertainment  
like no other.

(585) 388-1699  
www.UltimateMitzvah.com

Your finances. Your future. *Our focus.*



**Michael H. Cooper**  
Senior Vice President-  
Wealth Management

**The Rochester Group**  
400 Linden Oaks, 2nd Floor  
Rochester, NY 14625  
585-218-4593  
michael.h.cooper@ubs.com

We will not rest



## KOSHER & KOSHER-STYLE CUISINE

**BAR MITZVAHS • WEDDINGS**

Pattie Taylor Brown, Event Specialist



**585.244.2870**

www.RochesterCaterer.com

**Feldman**

HEATING & COOLING



1776 East Main Street, Rochester, NY 14609  
(585) 288-2050 HEATING-AIR CONDITIONING

For over 95 years, the Feldman family has been  
providing quality, energy-saving heating & cooling

**ECONOMY**  
PAPER COMPANY, INC.

FINE PAPERS  
INDUSTRIAL PACKAGING  
SANITARY MAINTENANCE PRODUCTS

1175 E. MAIN STREET • PO BOX 90420 • ROCHESTER, NY 14609  
TEL: 585-482-5340 • FAX: 585-482-2089  
WWW.ECONOMYPAPER.COM

**RE/MAX**  
Realty Group

Proven Performance with...

**Ira Jevotovsky**

Licensed Real Estate Associate  
Cell: (585) 230-1187

E-mail: Jevoi@rochester.rr.com • www.SoldByIra.com



Before



After

Ira understands  
your family's  
needs

www.toptobottom.tv

Ask yourself, is your repairman too  
expensive, unreliable, unpredictable?

**#1 IN REPAIRS**

- Gutter Cleaning
- Roofing
- Chimney
- Gutters
- Masonry
- Siding
- Carpentry

- Insulation
- Snow & Ice
- Chimney Liners
- Basement Walls
- Painted/Repaired
- Water Proofed
- Doors, Etc.

Since 1988

**TOP TO BOTTOM**

Expert Evaluation • Fully Insured  
Free Estimates • Guaranteed • Senior Discount

Your Safest Choice

**338-9865**



For 24 Hour Emergencies, Call 764-8204

24th Year Sponsor Johnathon A. Geer



PLEASE SUPPORT  
THESE ADVERTISERS  
THEY MAKE OUR  
NEWSLETTER POSSIBLE

For more information call Liturgical Publications Inc  
at 1.800.368.7010

## Senior Care Solutions



Concerned About Your Loved One  
Managing at Home? We Can Help.

For Information about Aging-at-Home &  
Caregiver Support Call **(585) 461-0110**

A Program of  
Jewish Family Service

441 East Ave. Rochester NY  
www.jfsrochester.org

**SEZ Scott E. Zakalik, CPA, P.C.**

Integrated Wealth Management Solutions<sup>SM</sup>

Accounting | Taxes | Insurance | Investments\* | Retirement

(585) 425-1040

solutions@sez-cpa.com

(585) 486-1234

www.sez-cpa.com

6605-WB Pittsford-Palmira Road | PO Box 180 | Fairport NY 14450  
\*Securities and investment advisory services offered through FSC Securities Corporation, Member FINRA/SIPC  
and a registered investment advisor Scott E. Zakalik, CPA, P.C. is independent of FSC Securities Corporation

**This Space Available**



For Information On  
Advertising,  
Please Call Our  
Representative



Liturgical Publications Inc  
Connected Your Community

**Bob Tucker**  
at 800-888-4574 x3433 or  
Email: rmtucker@4LPi.com

# **Selichot Service**

**“Music for the Soul”**

**An exquisite evening of prayer  
and orchestral music to usher in  
the Jewish New Year 5775**

Featuring Rabbi Bitran, Hazzan Leubitz, Rabbi Freidson-King,  
**The Penfield Symphony Orchestra** conducted by David Harman,  
the TBE Selichot string quartet and High Holy Day choir.

Saturday, September 20, 2014



**7:30 pm - Mincha Service**

**8:00 pm - Seudah Sh'leesheet (3rd Shabbat meal)**

**8:50 - Ma'ariv/Havdalah (conclusion of Shabbat)**

**9:15 - Selichot Service**

**10:30 - Memorial Plaque Dedication**

**Champagne Reception to follow**





## Usher in the New Year with a "sweet" gift of Apples & Honey!



For a \$54 contribution, your name will be added to the list of sponsors for the annual outdoor Kiddush at the conclusion of the first day of Rosh Hashanah services. Your name will also be added to a special card wishing the congregation a Shanah Tovah! Your contribution is a wonderful way to wish friends, family, and TBE members a joyous New Year. Please make checks payable to Temple Beth El, and send them to the office no later than

**Thursday, September 11, 2014.**

.....  
**Yes, I (we) would like to wish the entire Temple Beth El family a Shanah Tovah!**

Name(s) (as I/we would like to be listed): \_\_\_\_\_

Phone: \_\_\_\_\_ Email: \_\_\_\_\_

~Enclosed is my \$54 check to Temple Beth El~

### *Remember Your Loved Ones...*

With a memorial plaque in the Sanctuary and Chapel.

Gold lettering on finished wood will adorn the wall of the Chapel, and a second plaque is hung in the Sanctuary on the Shabbat preceding the Yahrzeit. Plaques are dedicated during the Selichot service each year. The cost for both is \$600.00.

The deadline for ordering is **August 29th.**

.....  
Mail this form and check made payable to:

Temple Beth El  
139 Winton Road South  
Rochester, NY 14610

Date of Order: \_\_\_\_\_

In Memory of: \_\_\_\_\_

Date of Death: \_\_\_\_\_ Hebrew Date: \_\_\_\_\_

Person to Notify:

Name: \_\_\_\_\_ Address: \_\_\_\_\_

City, State, Zip: \_\_\_\_\_ Relationship: \_\_\_\_\_

Member Account #: \_\_\_\_\_ Payment Amount: \_\_\_\_\_

☐ Check ☐ Visa ☐ Master Card ☐ Discover

Credit Card Number: \_\_\_\_\_ Expires: \_\_\_\_\_

Name on Card: \_\_\_\_\_ Billing Address & Zip Code: \_\_\_\_\_

Signature: \_\_\_\_\_ Date: \_\_\_\_\_

# Spring Events at TBE



Friday Night Jazz



Building the  
Community  
Garden



Last Day of  
Religious  
School &  
Graduation



2014  
Annual  
Meeting



USYers leaving for Kinnus Gadol!



**Hazak, USY for Seniors** presents a bus trip for the community:

**JEWISH ROCHESTER THE WAY IT WAS**  
(A repeat of the 2011 trip as requested by many)

When: Sunday, July 27 - 2-5 pm boarding at 1:30 pm

What: A tour of past and present Jewish Rochester on an air conditioned, handicapped accessible bus with a toilet.

Who: Anyone age 10 and older from anywhere who wants to visit, revisit, or hear about the old synagogues, institutions, past leaders, stores, bakeries, orphanages, businesses, etc. that existed in the Jewish Rochester that was. This trip is open to all.

How Much: \$20. includes the cost of the bus and driver, snacks, and cold water.

Reservations and checks made out to Temple Beth El can be sent to: Abbey Rasnick, 240 Barclay Square Drive, Rochester, NY 14618, flyers are available at Temple Beth El.

For more information: call Sheila Gissin Weinbach at 585-732-0865 or email [sweinbach@msn.com](mailto:sweinbach@msn.com).

---

**BE A MINYAN MENSCH!**

**Minyan needs your help!**

Did you know minyan is held every morning at 7:30 am and every evening at 6:00 pm? TBE is the only egalitarian minyan in Rochester.

**Mourners Kaddish cannot be recited without at least 10 people present.**

Could you commit to one day a month to help make a minyan? Perhaps the date of your birthday? To join us in a meaningful community prayer.

Not enough time you say? **Minyan prayers require only 15 minutes of your time!**

---

**Bikkur Cholim:**

**Please let the Clergy Know...**

...if a family member or a congregant you know is ill or in the hospital.

Please contact the Temple Office if a friend or family member is in the hospital and they would like a visit from a member of the clergy or to be added to the misheberach list.

Rabbi Bitran, Hazzan Leubitz, and Rabbi Freidson-King are ready and eager to visit recuperating congregants or their loved ones either in the hospital, rehab facility, or at home, but can only do so if they know that someone is ill. So be their eyes and ears and keep them informed, help them fulfill the mitzvah of Bikkur Cholim - visiting the sick and bringing comfort to those who are experiencing health issues.

A simple call to the Temple Office at 473-1770 is all that it takes and is much appreciated.

**Just Judaica**  
**The Place to Shop for Summer Weddings!**  
**Exclusive Beautiful Jewish Wedding Cake Toppers**

The Gift Shop is open the  
3rd & 4th Tuesdays of each month 3-6,  
Weekly Wednesdays 4-6  
or by appointment -

call Gail at 473-6855, Lynda at 385-3563, or Iris at 244-3947.

*Also, dear Sisterhood members, we are looking for volunteers to man the Just Judaica Shop. If you are interested and have 2 or 3 hours available during the morning or afternoon please contact Lynda Axelrod at 385-3563 or Iris Mand at 244-3947.*

---

Highlights of the Minutes of the Board Meeting on  
May 12, 2014

**D'var Torah:** Hazzan Leubitz illuminated some of the themes of strength from this week's parshat of Bechukotai .

**Finance Committee Report:** 4<sup>th</sup> quarter numbers are not available, but we are on track. Expected to have a positive for year end. Dan Goldstein and Mark Haas are absent, so Todd did a very quick review.

**Education Committee Report:** New director is hired. Samara Sofian from Milwaukee with her 3 kids and attorney husband. By overwhelming support of the committee and Board, we are excited to have her come in July .

**Inclusion Committee Report:** Emily Krohn discussed some of her experiences as the coordinator for special needs services at TBE Religious School. Meeting with kids, parents, separately, together, to better understand what works best for specific kids learning abilities, via the Farash grant, which makes this possible. From Keshet to Koolanu there were services. June 13 is a special Shabbat dedicated to this special component of inclusion. Services as well as Saturday night, with the kids, families, will be promoted to make this a successful event for TBE. Ten are on this committee. This is a non-renewable grant, but we are hopeful that funding can be found.

**President's Report:** Collaboration Committee Update: 2 weeks ago we hit an impasse and the collaboration will not be going forward. Continued meetings to fine tune this closure are pending.

**Good & Welfare:** Well-received kiddish and 6<sup>th</sup> grade Shabbat last week in honor of Susan Bernstein. May 24<sup>th</sup> is graduation. Ora Academy is likely going to stay next year. May 15<sup>th</sup> Rabbi Nina Beth Cardin is coming to TBE to discuss sustainability and the values in living in the natural world as a Jew. This coincides with the inauguration of the community garden, which will follow after this presentation. Hillel dinner is on May 27<sup>th</sup> at TBE, honoring David & Ilene Flaum. Linda Reynolds is also being honored on June 8 at the Memorial Art Gallery. 235 for the second Seder and the Haas Bat Mitzvah is this Shabbat. Shavuot and blintz excitement is coming up. Dan Glowinsky thanked Todd in front of the board and gave a token of thanks gift, the same gift that all babies get for baby namings, an "I AM A TBE STAR" t-shirt. Todd graciously gave his thanks and a tender, meaningful goodbye and sincere thanks to TBE and the board for the honor of this position.

We are pleased to offer an ongoing bereavement group at TBE.  
Open to the Rochester community - feel free to share with family and friends.

## COMMUNITY BEREAVEMENT GROUP

Provides those who are mourning with emotional, spiritual and non-judgmental support in a safe and welcoming environment.  
Free of charge and open to those experiencing the loss of a person close to them.



**Facilitator:**  
**Talya Brea, LMSW**

Director of Clinical Services, Jewish Family Service

### Participants will find:

- A place to combat isolation and loneliness
- An opportunity to share and listen
- Techniques to cope and grow
- New connections and opportunities

First and third Thursday of each month (except for holidays)  
12:00 pm - 1:00 pm

First session: Tuesday, October 10, 2017

**Temple Beth El**  
139 Winton Road South  
Rochester, NY 14610

Participants may attend any session. Please contact Talya Brea at  
461-0110 or [tbrea@jfsrochester.org](mailto:tbrea@jfsrochester.org) for more information.

*This program is made possible by the generous support of the Ann Lib and Bernard Kozel Family Foundation.*

## CONDOLENCES

We record with sorrow  
the passing of:

**Ben Eisenstein, z'l**

Husband of Jill Eisenstein  
Father of Sarah Chaya (Jonathan) Sulman  
and Helene (Shmulik) Belo  
Son of Annette & Marvin Eisenstein  
Grandfather of Eve & Eleanor Sulman  
Brother of Audrey (David) Abrams and  
Stan (Nancy Brutsche) Eisenstein  
Brother-in-Law of Shelli (Sam) Asher

**Malcolm Glazer, z'l**

Husband of Linda Glazer,  
Father of Avram (Jill) Glazer, Kevin (Rachel) Glazer,  
Bryan Glazer, Joel (Angela) Glazer,  
Darcie (Joel) Kasewitz and Edward (Shari) Glazer  
Grandfather of Kendall Glazer, Libby Glazer,  
David Glazer, Haley Glazer, Jacob Glazer,  
Lily Glazer, Aerin Glazer, Ann Glazer, Zoey Glazer,  
Dylan Glazer, Ella Glazer, Audrey Kasewitz,  
Claire Kasewitz and Vivienne Kasewitz  
Brother of Jerome (Barbara) Glazer  
and Dottie (Melvin Chazen  
Brother-in-Law of Robert & Susan Simon

**Sally L. Hurwitz, z'l**

Mother of Linda (Robert) Mervis  
Grandmother of Bradley (Michelle) Mervis and  
Becca Mervis, Brian (Rebecca) Hurwitz  
and Michael Hurwitz  
Great-grandmother of Richie & Sarah

**Bruce Newman, z'l**

Husband of Helene Newman  
Father of Joy (Jonathan) Getnick, Eric and  
Sam Newman  
Son of Maxine Newman  
Brother of Larry Newman  
Son-in-Law of Pincus & Gloria Cohen

**Isadore Ouriel, z'l**

Father of Howard, Michael & Andrea Ouriel  
Grandfather of Andrew & Wendy  
Brother of Abraham Ouriel & Esther Schulman  
Brother-in-Law of Tillie Levinson, Rachel (Phil)  
Weinstein, Paula Ouriel and David H. Alva

**Lester Spector, z'l**

Father of Martin (Bonnie) Spector  
Father-in-Law of Gary Gottfried  
Grandfather of Jeff Gottfried, Daren Gottfried,  
Randy Gottfried, Todd (Lauren) Spector  
and Brandon (Caryn) Spector  
Great-grandfather of Aaron & Brittany Gottfried,  
Mason, Mariah, Brenna and Dillon Spector  
Brother of Cy and Lenny Spector

**Beckie L. Valinsky (Baker), z'l**

Mother of Dr. Mark Valinsky, Martin (Diane)  
Valinsky, Earl Valinsky, Ronald (Pamela) Valinsky,  
and Lauren (Stephen) Rosenberg  
Sister of Joseph (Dona) Baker  
Sister-in-Law of Barbara, Sandra & Stella Baker  
and Vera Altman

**May their souls be bound up  
in the bond of life.**



# Men's Club of Temple Beth El

*Involving Jewish Men in Jewish Life*

Federation of Jewish  
Men's Clubs

## Sunday, August 17 Rochester Red Wings Baseball – Frontier Field

Join us for our annual visit to Frontier Field to see the Red Wings.

**Game time: 6:05pm. Rochester vs. Syracuse Chiefs** (Washington Nationals' AAA affiliate)

\$6.50 per ticket. Checks payable to Men's Club of Temple Beth El must be received in the Temple office by **Monday, August 11.**

**Everyone is welcome to join us. Support the team. Support TBE. Have a great time!**

## TBE Sisterhood

### NEXT GENERAL SISTERHOOD MEETING:

**SUNDAY, JULY 13**

**12:30 – 2:30 p.m. Lunch Provided**

**by Sisterhood**

**At Susan's house: 44 Woodland Rd, Pittsford**

**Planning ideas for next year have begun!**

**RSVP to Susan by Friday, July 11!**

**385-7663 or email [susan@rochester.rr.com](mailto:susan@rochester.rr.com)**

### Join Us on Monday, August 4

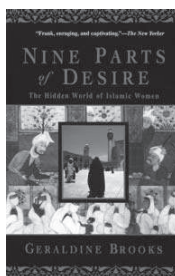
#### Hiddur Mitzvah Candle Holder Decorating

at 7PM followed by the Tisha B'Av reading of Eicha using our candle holders to enhance the spirit.

This craft is for everyone 5-105!

To be sure we have enough supplies, please register by contacting Susan Zauderer at 385-7663 or [susan@rochester.rr.com](mailto:susan@rochester.rr.com).

\$3 donation payable at the door suggested to cover supply costs.



## Temple Beth El Sisterhood

### Summer Book Club

DATE CHANGED TO MAKE ROOM FOR  
THE JEWISH FILM FEST

Save the evening of JULY 23 to meet with your Sisterhood friends.

Join Athene Goldstein in a discussion of ....

### **Nine Parts of Desire,** by Geraldine Brooks

Did you know that, before she turned to writing fiction, Brooks was a foreign correspondent for the Wall Street Journal? As she traveled through the Middle East to observe and document the strife in that part of the world she made note of the daily life of Muslim women.

Wednesday, July 23 at 7:30 pm

Marcia Nabut, 10 Danbury Circle North, 14618

RSVP [mnabut@rochester.rr.com](mailto:mnabut@rochester.rr.com) or 271-4189

### **SAVE THE DATE SAVE THE DATE SAVE THE DATE**

Join the TBE Sisterhood Book Club on Wednesday, September 17 when Athene Goldstein will discuss Ari Shavit's **My Promised Land: The Triumph and Tragedy of Israel.**

Shavit, will be in Rochester this coming November as part of the Jewish Book Festival. Read him. Discuss him.

### *It's Time to Send in Your Sisterhood Membership!*

Our personal touch helps to make the synagogue a warm and welcoming place.

***Show your support for all we do with \$36 dues. Don't delay! Send in your dues today!***

\*Sisterhood members also belong to Women's League for Conservative Judaism and have access to the programs, website, conferences and training of WLCJ which represents you at major Jewish, international, national, religious, and public advocacy organizations. We are part of the International Northeast Region (INR) including Western New York, Toronto and Montreal. ....

Kindly remit your dues to the synagogue office by August 15. Please make check payable to: Temple Beth El Sisterhood Member's name \_\_\_\_\_

Phone \_\_\_\_\_ E-mail \_\_\_\_\_

Address \_\_\_\_\_

\_\_\_\_\_\$36 Membership Dues for July 1, 2014 expiring June 30, 2015 enclosed

What programming or services will interest you in TBE Sisterhood? \_\_\_\_\_

New members to TBE as of July 1, 2014 receive a complimentary first year of Sisterhood membership!



# Tikkun Olam

Join us as Temple Beth El helps others in need in the Rochester community.

## MITZVAH OF THE MONTH PROJECTS - July/August:

**ASBURY:** Help with set-up or serve lunch with the TBE team at Asbury Dining & Caring Center from 11:15/11:30-1:30 on **Sunday, July 13**. Please contact Carol Konuksever (ckonuksever@tberochester.org or 473-1770) to register. Other teams often need help during the summer, so if you would like to work on a different date, please contact Carol. **Future TBE team dates:** September 14 and November 16.

**SHEETS, BLANKETS, BEDCOVER DRIVE:** Gently used sheets, blankets and bedspreads will be collected and provided to Asbury/Storehouse, as well as to refugee families.

# RAIHN

Dear RAIHN Volunteers (Past, Present and Future)

It's that time again! Temple Beth El's next RAIHN (Rochester Area Interfaith Hospitality Network) week begins on July 13.

Many of you have participated in the past and know what a wonderful, inter-generational experience and mitzvah it is. TBE volunteers have enjoyed preparing and serving meals for and spending time with the RAIHN families and meeting our neighbors across the street at the First Unitarian Church.

For those of you new to RAIHN, Temple Beth El has partnered with First U to service homeless families working toward sustaining independence by providing meals and lodging for one-week shifts several times a year. During our most recent shift in January, Temple Beth El volunteers prepared dinner and spent time with RAIHN families.

For our July shift beginning on 7/13, we will be cooking and serving dinner Sunday 7/13 (which has been reserved exclusively for Temple Beth El). We are looking for volunteers to sign up to make the meal (or parts of it) that Sunday - Vegetarian Lasagna, broccoli, salad and cupcakes. Meals may be made ahead and dropped off at the church or prepared at First U.

There are plenty of other ways to participate! Volunteers are needed to help set up tables and beds on Sunday and prepare and/or serve meals throughout the week. Volunteers are also needed for late afternoon and evening activities with the families.

A full sign up schedule is being circulated.

I also wanted to share a link to a recent RBJ non-profit report about RAIHN where you can find some information and statistics about the organization: <http://www.rbj.net/article.asp?aID=208353>. I'm happy to share additional information with individuals new to RAIHN as well.

Warmly,  
Leah



## We want to share your good news!

Engagements, weddings, births, awards, honors, degrees, anything that is happening that you would like to share, please let us know.

Email Anna Eckert at [aeckert@tberochester.org](mailto:aeckert@tberochester.org) or Carol Konuksever at [ckonuksever@tberochester.org](mailto:ckonuksever@tberochester.org) and we will share the good news with your friends and neighbors.



**Aaron Gabay Children's Garden Fund**

For the Yahrzeit of Anne Diamond  
*Sharon and Dov Margolis Apfel*  
 For the Yahrzeit of Beatrice Diamond  
*Sharon and Dov Margolis Apfel*  
 For the Yahrzeit of Ethel Lefberg  
*Barbara and Sam Waldman*  
 For the Yahrzeit of Bernard Waldman  
*Barbara and Sam Waldman*  
 In memory of Bruce Newman  
*Marcia and Gary Stern*  
 In memory of Ethel Saperstone  
*Barbara and Sam Waldman*

**Capital Campaign Fund**

For the Yahrzeit of Marion B. Poze  
*Susan and Jack Krieger*  
 For the Yahrzeit of Samuel Poze  
*Susan and Jack Krieger*  
 In memory of Miriam G. Gould  
*Myrna and Seymour Weinstein*  
 In memory of Dorothy Tishkoff  
*Betty Tishkoff*

**David E Sadick Jewish Enviro. Fund**

For the Yahrzeit of Ida Morin  
*Dorothy Sadick*  
 In appreciation of Rabbi Nina Beth Cardin  
*Dorothy and Robert Sadick*  
 In appreciation of Deborah Zeger  
*Dorothy and Robert Sadick*

**Earl Goldstein Torah Memorial Fund**

For the Yahrzeit of Morton Salit  
*Marilyn Salit*  
 For the Yahrzeit of Philip Salit  
*Marilyn Salit*

**General Fund**

Donation  
*Harry Davidson*  
*Isobel Goldman*  
 For the Yahrzeit of John Davis  
*Betsy and Marc Brugg*  
 For the Yahrzeit of Basya Falkovich  
*David Falkovich*  
 For the Yahrzeit of Perry Leon Goldstein  
*Joyce L. Goldstein*  
 For the Yahrzeit of Ida K. Gould  
*Lewis Gould*  
 For the Yahrzeit of Irwin Hoffman  
*Harry Hoffman*  
 For the Yahrzeit of Malka Kusler  
*Judith Alderman*  
 For the Yahrzeit of Gary S. Paston  
*Linda Epstein*  
 For the Yahrzeit of Isaac Schechterman  
*Beth M. Elkin*  
 For the Yahrzeit of Max Stern  
*Esther Goldberg*  
 For the Yahrzeit of Yehudah Yungelson  
*Deborah and Robert Rothman*  
 For the Yahrzeit of Beverly Ribet  
*Stephen Sundell*  
 In honor of Arabella Dworkin's Simchat Bat  
*Deborah Zeger*  
 In honor of Lily Glaser's Bat Mitzvah  
*Deborah Zeger*

In honor of Hillary Haas' Bat Mitzvah  
*Susan and Jack Krieger*  
 In honor of Stacey Lampell's MBA graduation  
 from Simon School  
*Paulina and Larry Kovalsky*  
 In honor of Marilyn Manis - Volunteer of the  
 Year  
*Jodi Manis, Beth and Jacob Goldberg*  
*Joy, Tom and Sara Piekunka*  
 In honor of Sara Piekunka's college graduation  
*Esther Smalline*  
 In honor of Zachary Tabachnikoff's  
*Judy Abelman & Barry Goldfarb*  
 In honor of Ellie Rachel Teigman's birth  
*Leslie and Howard Crane*  
*Paulina and Larry Kovalsky*  
 In memory of Malcolm Glazer  
*Leslie and Howard Crane*  
*Pamela and Richard Kroll*  
 In memory of Miriam Gould  
*Eke Aiono*  
*Judy and Mark Alderman*  
*Joyce and John Considine*  
*Marlene and Ross Elkin*  
*Arlene Stolnitz*  
*Deborah Zeger*  
 In memory of Bruce Newman  
*Judy and Mark Alderman*  
*Wilma and Robert Bass*  
*Leslie and Howard Crane*  
*Ilene and David Flaum*  
*Esther Goldberg*  
*Sherry and Richard Goldstein*  
*Nancy and Leon Gossin*  
*Pattie and Mert Home*  
*Jerry Goldman*  
*Ellen and Charles Konar*  
*Paulina and Larry Kovalsky*  
*Sharon Kovalsky*  
*Gretchen Kriss*  
*Pamela and Richard Kroll*  
*Naomi and David Lederman*  
*Rita Yaroslow McCarthy*  
*Harriet and Murray Merl*  
*Carolyn and Marvin Miller*  
*Marla and Michael Miller*  
*Mr. and Mrs. Wilfred Newman*  
*June Rapowitz*  
*Lois Roth*  
*Wendy and Jack Scull*  
*Betty Tishkoff*  
*Darla and Mark Wheaton*  
*Marcia Yaroslow*  
 In memory of Ethel Saperstone  
*Miriam and Lloyd Krieger*  
 In memory of Evelyn Scull  
*Esther Goldberg*  
 In memory of Ruth Strassberg  
*Naomi and David Schrier*  
 In memory of Morria Valinsky  
*Vera Altman*  
 In memory of my father  
*Jeannette Kanter*

**Halpern Cantorial Concert Fund**

For the Yahrzeit of Ann Ross  
*Harold Ross*  
 In memory of Bruce Newman  
*Noreen and David Halpern*  
**Harry & Regina Cornell Mem. Fund**  
 For the Yahrzeit of Michael Nozik  
*Gabriella Nozik*  
 In memory of Bruce Newman  
*Linda and Sherwin Weinstein*  
**Hazzan's Discretionary Fund**  
 For the Yahrzeit of Louis Fagenbaum  
*Shirley Fagenbaum*  
 For the Yahrzeit of Morris Fagenbaum  
*Shirley Fagenbaum*  
 For the Yahrzeit of Jacob Finer  
*Florence Salitan*  
 For the Yahrzeit of Ethel Kestenblatt  
*Susan and Robert Simon*  
 For the Yahrzeit of Mortimer A. London  
*Lois London*  
 For the Yahrzeit of Adele Saperstone  
*Trudy and Albert Sheinfeld*  
 For the Yahrzeit of Solomon Shertok  
*Joel Shertok*  
 For the Yahrzeit of Irving Simon  
*Joshua Levy*  
*Susan and Warren Simon*  
 For the Yahrzeit of Sophie Tepperman  
*Robert Rutzen*  
 In appreciation of Hazzan Leubitz  
*Jack Sandler & Family*  
 In honor of Cheryl Kovalsky and David Fenig  
 on their marriage  
*Jodi and Jonathan Roberson*  
 In honor of Morning Minyan  
*Eileen & Marvin Fishman*  
 In memory of Ethel Kestenblatt  
*Richard Kestenblatt*  
 In memory of Isabelle Kestenblatt  
*Richard Kestenblatt*  
 In memory of Bruce Newman  
*Betsy and Stuart Bobry*  
*Barbara and Irving Cohen*  
*Esther and Manuel Cohen*  
*Phyllis Kasdin*  
 In memory of Ethel Saperstone  
*Trudy and Al Sheinfeld*  
**Hebrew School Discretionary Fund**  
 In honor of Hillary Haas' Bat Mitzvah  
*Leslie and Howard Crane*  
 In memory of Bruce Newman  
*Iris and David Mand*  
*Linda Reynolds*  
**Keshet Nursery Fund**  
 For the Yahrzeit of Adeline Evans  
*Richard Evans*  
 In memory of Ethel Shiffrin  
*Iris and David Mand*  
**Kiddush Fund**  
 For the speedy recovery of Janet Sunkin  
*Linda Reynolds*  
 For the Yahrzeit of Hyman E. Brody  
*Barbara and Irving Cohen*



**Donations - Kiddush Fund (continued)**

For the Yahrzeit of Rose Elbaum

*Annette Eisenstein*

For the Yahrzeit of Bessie Spector

*Gary Gottfried*

In honor of Holli Budd's daughter recent marriage

*Judy Azoff and Malcolm Musiker*

In honor of Mark Kolko's special birthday

*Dvora Kolko*

In honor of Debby Landsman's retirement

*Jodi and Jon Roberson*

In honor of Ava Gabrielle Mabila's naming

*Iris and David Mand*

In honor of Marilyn Manis - Volunteer of the Year

*David Rogachefsky*

In honor of Barb Schron on the birth of a grandson

*Deborah Zeger*

In memory of Bruce Newman

*Debi and Ralph Brenner*

*Annette and Marvin Eisenstein*

*Virginia and Irving Gordon*

*Amy and Peter Harvey*

*Faye Herr*

*Marcia Gabrilove-Ladin & Scott Ladin*

*Hillary, Elysa, Stacey & Eden Lampell*

*Marilyn and Irving Manis*

*Bernice and Willard Sklar*

*Debbie and Mark Zeger & Family*

In memory of Ethel Saperstone

*Molla and Ralph Carr*

**L D Schacht Minyan/Chapel Fund**

In memory of Bruce Newman

*Athene Goldstein*

**Library Fund**

For the Yahrzeit of Frank Shames

*Phyllis and Marty Korn*

For the Yahrzeit of Dorothy Gebofsky

Shames (Kaplan)

*Phyllis and Marty Korn*

In memory of Judy Sandler

*Roxanne and Edwin Schulman*

**Maxine Peter's Memorial Fund**

In honor of Seth Borg with my appreciation

*Mona Kolko*

**Neil Norry Mem Campership Fund**

In appreciation of Rabbi Bitran

*Jill and Sam Katz*

In appreciation of Hazzan Leubitz

*Jill and Sam Katz*

In honor of the birth of our great-granddaughter, Calliope

*Roberta and Malcolm Savedoff*

In memory of Bruce Newman

*Louise Epstein*

*Tracie and Abe Glazer*

*Jerome Saunders*

Mazal Tov to Sam Katz on the graduation of

his grandchildren, Jacob Norry, Elana &

Chagai Mendelson

*Jill Katz*

**President's Discretionary Fund**

In memory of Bruce Newman

*David Rogachefsky*

**R Briskin Cantor-in-Residence Fund**

For the Yahrzeit of Jacob Lederman

*Pauline and Eziel Reitzfeld*

For the Yahrzeit of Bernard T. Libglid

*Rosalyn Schreiber*

For the Yahrzeit of Michael Rosenbaum

*Roslyn Griesbach*

For the Yahrzeit of Hyman Wasserman

*Pauline and Eziel Reitzfeld*

In memory of Miriam Gould

*Adell and Alvin Ornstein*

In memory of Bruce Newman

*Thomas Rheinstein*

*Beatrice C. Roxin*

**Rabbi Bitran's Discretionary Fund**

For the Yahrzeit of Albert Barnett

*Susan Barnett*

For the Yahrzeit of Bernice Hellman

*Elyse and Larry Fine*

For the Yahrzeit of Leonard Relin

*Susan Barnett*

For the Yahrzeit of Bertha Rudolph

*Perry Myers*

For the Yahrzeit of Tamara Esther Siegel

*Sandra and Joel Siegel*

For the Yahrzeit of Samuel Smith

*Gerry and Sandy Appelbaum*

In appreciation of Rabbi Bitran

*Jack Sandler & Family*

*Ingrid Wohlgemuth*

In honor of Hillary Haas, granddaughter of Eileen

& Michael Grossman on her Bat Mitzvah

*Judy Azoff and Malcolm Musiker*

In memory of Malcolm Glazer

*Trudie and Ronald Kirshner*

*Julie and Jack Nadel*

In memory of Bruce Newman

*Rina and Danny Chessin*

*Randi and Richard Cowen & Family*

*Daphne Futerman and Ira Jevotovsky*

*Joan and Beryl Nusbaum*

In memory of Judy Sandler

*Ronnie and Les Abramovitz*

In memory of Norman Spector

*Harriet Weiss*

**Rabbi Freidson-King's Discretionary**

For the Yahrzeit of Herbert Brenner

*Zara and Charles Brenner*

For the Yahrzeit of Shirley Chakov

*Trudy and Al Sheinfeld*

For the Yahrzeit of Sol Cherry

*Dorothy Cherry & Family*

For the Yahrzeit of Baby Mary Rose Gordon

*Phyllis and Sandy Kravetz*

For the Yahrzeit of Jessie Melter

*Bea and Dick Rosenbloom*

For the Yahrzeit of Charles Myers

*Perry Myers*

In appreciation of Rabbi Freidson-King

*Lewis Gould*

In memory of Bruce Newman

*Shelly and Julian Braiman*

*Nancy Krieger and David Bushinsky*

*Judy Azoff and Malcolm Musiker*

*Genevieve and Harris Siegel*

**Scholarship Fund**

For the Yahrzeit of Morton Feldman

*Roberta and David Feldman*

For the Yahrzeit of Sarah Green

*Jessica Green*

In honor of Zachary Micah Till Tabachnikoff's Bar Mitzvah

*Nina Chazanoff*

In memory of Bruce A. Newman

*Merle and Lawrence Markus*

*Valerie Price Ciuffo and Philip Ciuffo*

*Pauline Newman Price*

In memory of Richard Price

*Valerie Price Ciuffo and Philip Ciuffo*

**Shulman Children's Music Fund**

For the speedy recovery of Stuart Bobry

*Debbie and Hank Shulman*

In memory of Bruce Newman

*Dvora and Henry Shulman*

**Sidney Levinson Youth Memorial Fund**

In memory of Bruce Newman

*Lori, Frank, Sandi and Carolyn Karbel*

*Tillie Levinson*

*Mr. & Mrs. Milton Smith*

*Lois and Richard Spero*

*Tammi and Gary Steinberg*

*Rachel and Phil Weinstein*

In memory of John Valenti

*Arlean and Richard Levinson*

Mazal Tov to Helene and Shmulik on their wedding

*Tammi and Gary Steinberg*

**TBE Foundation**

In memory of Malcolm Glazer

*Joan and Beryl Nusbaum*

In memory of Bruce Newman

*Doris, Elana and Daniel Bobry*

**TBE Programming Fund**

For the Yahrzeit of Ida K. Gould

*Deborah Gould Landsman*

In honor of Hillary Haas' Bat Mitzvah

*Leslie and Howard Crane*

**Weintraub Memorial Fund**

For the Yahrzeit of Marion Slate

*Weintraub Family*

For the Yahrzeit of Morris Weintraub

*Weintraub Family*

For the Yahrzeit of Pauline Weintraub

*Weintraub Family*

In honor of Hillary Haas' Bat Mitzvah

*Weintraub Family*

In memory of Bruce Newman

*Molla and Ralph Carr*

*Miriam Weidenfeld*

Every contribution to a Temple Beth El fund is worth *menschening*. However, we can only publish those that are \$10 or more. The contributions listed were received between May 10 and June 10, 2014. If your contribution is not listed, please call the TBE Office, we will correct it in the next KOL issue.

**YAHREZEITS... Dates are determined according to the Hebrew calendar. The names will be listed in the Shabbat program booklet on the date listed.**



			TO REMEMBER	
<b>July 5</b>	Shari R. Alent	A. Harvey Stolnitz	Morris Silverman	<b>August 2</b> Sarah Abramow Fae Abramowitz Hyman Barnet Freida Braverman Sarah Bresloff Morris Bushinsky Harry Capell Gary Cassorla Irene V. Clifton Arthur Cohen Henry Cohen Leon Charles Cohen Moses Cohen Max F. Cowan Ruth Demler Juana Farber Berl Fayerberg Sadie G. Friedson Louis Gamm Hersch Gewertz Anna Goldman Sadie Gertrude Goldman Ben Grace Adele Greenberg David Louis Greenberg Irving R. Grundstein Estelle Handelman Ida Handelman Goldie Henry Jean Kamin Itta Koretskaya Fannie Landsman Louis Lefberg Joseph Legumsky Efim Lekhter Mae H. Levine
Robin P. "Bonnie" Alderman	Warren G Alent	Lillian Waltzer	Michael Sklar	
Isaac Beck	Sarah Ann Arkin	Ida Weinstein	Thelma Ring Smith	
Gennadiy Berenshteyn	Clarence Cohen	Anna Weintraub	Kate B. Spiller	
Herman Bloomberg	Raymond M. Cohen	Lesser Witrack	Abraham Tsukerman	
Edmund B. Bracker	Louis B. Cominsky	David Wolin	David Von Perlstein	
Leon M. Brint	Haim Duberstein	Benjamin Wurtzman	Shirley Weintraub	
Reala Snyder Bunis	Seymour L. Dushay	Lena Wynar	Jacob Wexler	
Mendel Burd	Allen Eber		Max Widawski	
Ida Libby Byer	Victor Ergas	<b>July 19</b>	Joseph Wolitzky	
Hilda Cohn	Pearl Felderstein	Sol Aiolo	Anna Zamos	
Allan Dinaberg	William Finestone	Lester Appelbaum	Abraam Zatz	
Rose S. Eber	Samuel Fitelson	Fanny Berger		
Joseph Flatow	Ida Garsenstein	Frances Bernstein	<b>July 26</b>	
Bernard Goldowitz	David Goldberg	Morris Braverman	Samuel Aiolo	
Mildred Goldstein	Moses Goldstein	Esther P. Brody	Norman R. Aronson	
Shirley Gray	Margaret Greenberg	Jacob Buff	Doriene Baker	
Michael Greenholtz	Reva Zeesman Harrington	Hyman Cilman	Jacob Baldwin	
Helen Nusbaum Grossman	Carrie A. Herman	Milton Cohen	David Becker	
Yetta Harris	Nathan Herzog	Rachel Davidson	Max Bernhard	
Kate Itkin	Mary L. Holub	Anna Eissenstat	Molly Bresloff	
Abram Jacobstein	Raymond J. Horiwitz	Kate Endlich	Morton Brodsky	
Emilie Katz	Helen Hormats	William T. Feld	Hena Gewertz Bromberg	
Bertha Klein	Ida Jossel	Leah J. Fernandez	Dorothy B. Bunis	
Shriul Kogan	Boris Kaminker	Joseph M. Fox	Joseph G. Cassorla	
Milton Kroll	Michael Kerchner	Laibe Freeman	Mamie Cilman	
Garson J. Kwasman	Ester Kohen	Havah Gilderman	Ethel Cohen	
Ella Lampell	Frances W. Konoff	Harvey Glicksman	Henry Cohen	
Norman Lank	Ida S. Kosoff	Abram P. Goldstein	Jack Cohen	
Mollie Lapides	Leland W. Krieger	David D. Gordon	Rose Cohen	
Sol C. Lapides	Owen Avery Krieger	Zohar Harary	Sophie Dasevschi	
Samuel Lempert	Gussie Tatelman Kristall	Molly Heicklen	Lillian B. Diamond	
Harold H. Levine	Ann W. LaBaer	Theodore R. Holstein	Ora Diamond	
Morris Mandwelle	Harry F. Levine	Aaron Horwich	Herman Elbaum	
Anne C. Melman	Bernard Michaels	Melvin Kahan	Julius Esterman	
Martin M. Mills	Ruth M. Miller	Oscar Kaplan	Alfred Feltman	
Philip Moss	William Musiker	Deborah Burstein Karp	Anna K. Fink	
Philip Neivert	Jack Neiman	Gilbert Kasdin	Nathan Fischer	
Annette Krieger Olsan	Fannie Novy	Nissan Kaufman	Harry Fox	
Harry Peck	Fan Nusbaum	Samuel Kaufman	Rhoda Helene Goldstein	
Michael Pelta	Murray Allen Perlman	Jacob Kowal	Etta Rubens Greenberg	
Charles Port	Joslyn Phillips	Frieda Krieger	Hyman Greenberg	
Sarah Posner	Shlomo Prokupets	Ainsley Lasky	Isidore Held	
Morris I. Poze	Samuel Ressel	Alfred Lazarus	Hillel L. Horn	
Julius Prives	David Rosen	Harry Levinstein	Dorothy G. Kahan	
Chaya Rotenberg	Max Z. Rosenbloom	Harry Levy	Jacob J. Kohen	
Anna Roxin	Kathye Rothman	Fannie Alderman Libglid	Robert Korenstein	
Sarah Rubin	Samuel B. Rothschild	Selma C. Maltinsky	Alfred Kravetz	
Jack Salzman	Elsa Ruben	Mary Blume Meyer	Sarah Lederman	
Helen K. Silver	Hersh Rudnick	Michael Mittleman	Hyman Lisson	
Lena Spindelman	Rebecca W. Rumaner	Albert Newman	Celia L. Maltinsky	
Rose Tatelman	Anna Sachsels	Paula Posen	Herman Mand	
Elva Wexler	Betty Salesin	Max Rosenbaum	Fred Mayer	
Mort Winn	Harry Sanzel	Mollie Rosenbaum	Maurice Melin	
Rebecca Witrack	Shirley R. Sass	Sanford Rudnick	Anna Miller	
Burton Wolff	Katherine Schweid	Samuel Sacks	Eleanor Myers	
	Ellison Siegel	Milton Salz	Lester Nusbaum	
	Gertrude Solomon	William M. Savedoff	Philip Okun	
	Anne Stark	Bessie C. Siegel	Bernard Rose	
<b>July 12</b>				
Rose Koffman Adams				



## August 2 (cont.)

Alexander Mann  
Arthur A. Michlin  
Sura Mirochnik  
Elkan Munter  
Belle Nusbaum  
Leonard J. Nusbaum  
Ella S. Oken  
Ida B. Rapp  
Morris Raskind  
Margot Roth  
Vera Sandburg  
Morris Saperstone  
Maurice Schlossman  
Morris Shushan  
Jerome S. Smalline  
Benjamin Stein  
Rebecca Stonefield  
Rose Wacks  
Fannie Weinstein  
Diana Weiser  
Edward Wronker  
Jack Wynar  
Morris Zeger  
David Russell Zinkin  
Isadore Zipkin

## August 9

Juan Abrahamson  
Dorah Ball  
Max M. Berger  
Samuel Borisoff  
Genya Burd  
Mollie Caplin  
Abram Danilovich  
Maurice Davidson  
James M. Davis  
Herman Dworsky  
Max Edelson  
Aaron Eden  
Louis Feinstein  
Belle L. Forman  
Ephraim Freedman  
Marvin N. Goldstein  
Samuel Gross  
Betty Gutkin  
Gert Harrison  
Etta Hitter  
Morris Hoffman  
Hilda Horwich  
Feigi Iskovitz  
Leibish Isaac Iskovitz  
Carol Joyce Winn Kaye  
David Komenski  
Lottie W. Lasky  
Hyman Levison  
Mildred G. Mace  
Ida Mann  
Dorothy Manson  
Sally M. Mayer  
Meyer A. Miller  
Sonia Morgan

Sherwin Morris  
Charles Naditz  
Henry Neivert  
Seymour Pollan  
Beryl M. Oser Present  
Mabel K. Prives  
Rose Rechter  
Manfred Rosenstein  
Julius Rutchik  
Donald F. Schneiderman  
Sarah Rachel Shamaskin  
Jacob Shapiro  
Samuel C. Shoolman  
Albert A. Silbermann  
Harry Slavny  
Morris Sweedler  
Mary Rebecca Sykes  
Bertha Esther Taffel  
Abraham J. Tatelbaum  
Matilda Tobochnik  
Simon Weissager  
Irving Weltman  
Larry Wolfson  
Donald M. Wolin  
Thelma B. Wolk

## August 16

Harry L. Albert  
Anna Baldwin  
Jenny M. Barash  
William Berger  
Benjamin S. Black  
Max Clonick  
Rosella Cohen  
Max Coleman  
Hyman Dankner  
Frieda Davidson  
Marion M. Doner  
Ida Edelberg  
Al Ellowitch  
Mordecai Epstein  
Benjamin Farber  
Lillian Feshbach  
Meyer Fix  
Ruth Forman  
Ezra Frankel  
Adolph Friedman  
Howard Garaventi  
Sarah Gastel  
David H. Goldman  
Max Gonsenhauser  
Lillian Goodman  
Sylvia Greenberg  
Rifka R. Kaplan  
Gerald R. Katz  
Liza Katzowicz  
Irving Kurz  
Benjamin Kusler  
Anna Levi  
Selma Levis  
Yale Sander Lewine  
Minnie Marks

Rose Krieger Medwin  
Aaron Mellman  
Henry Morris  
Nathan Olenikow  
Israel Osband  
Sonia Phillips  
Charles N. Rapfogel  
Abraham J. Reich  
Jerold Jay Relin  
Arlayne Rogoff  
Seymour S. Rosenhouse  
Ruth Sandler  
Jack Sanow  
Morris Schaft  
Louis Schulder  
Dorothy Simon Shamaskin  
Valeria Shayne  
Louis A. Shorr  
Marion Silverman  
William Stein  
Harry Sykes  
Abram Tabachnick  
Minnie Taksen  
Ze'ev Taksen  
Jacob Umansky  
Isaac Vilnits  
Julian Vogel  
Alexander Weissager  
Elizabeth L. Wishman  
Benjamin Wolin  
Estelle Zimmerman  
Abraham Zisser

## August 23

Isadore Alpert  
Betty Block  
Bella Borovoy  
Nathan Carr  
Gertrude Cohen  
Naomi Cohen  
Pearl Cohen  
Esther Davis  
Sarah Davis  
Harry Eber  
Farag ElKodsi  
Dorothy Fink  
Harry Frank  
Sandra Gamm  
Katherine Goldberg  
Nelson Goldstein  
Solomon Golub  
Nathan Greenberg  
Peter Griesbach  
Raye Grossman  
Anne Harris  
Louis Hoffman  
Isadore Illman  
Seymour Jacobson  
Sam Jevotovsky  
Albert Joffe  
Muriel A. Katz  
Eva Kaufman

Beverly Kolko  
Morris Kravetz  
Eunice Krieger  
Helen Krieger  
Boris Kublanov  
Rabbi Hyman M. Lasker  
Ida W. Leichtner  
Arthur Maas  
Anna Marder  
Minnie Marine  
Eric Meier  
Nathan Miller  
Rocky Newman  
Paul Philipp  
Betty Ruth Raines  
Abe Rudnick  
Philip Rudolph  
Etta Schulman  
Frederick Schwartz  
David Silver  
Theodore Stark  
Marcia Stein  
Eleanor S. Steron  
Melville Waltzer  
Israel Weinbach  
Sol Wolitzky  
Miriam Yasinow  
Stanley Yules  
Rachel Zimmerman

## August 30

Eugene J. Allyn  
Sidney Altman  
Herman Jacob Auspitz  
Jonathan M. Birnbaum  
Louis Brener  
Dora Brill  
Richard Briskin  
Betty Brodsky  
Ida Brody  
Albert A. Clonick  
Raye Clonick  
Libbie Diamond  
Rose Diamond  
Selma Flaum  
Jakob Flicker  
Sadie Fritt  
Dorothy Gamm  
Bertha M. Goldstein  
Henrietta Goss  
Albert Greenberg  
Esther S. Handelman  
Eva Heicklen  
Kenneth Hollander  
Pauline Hollander  
Reva Nagan Joffe  
Etta Joroslow  
Jacob Joroslow  
Jennie C. Kaplan  
Max Katzowicz  
Benjamin Klein  
Burton Samuel Kolko

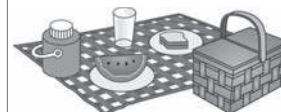
Bernie Laurie  
Victor Lazarus  
Allen Lesser  
Louis J. Ligotti  
Frieda Mandell  
Haskel G. Manson  
Harry Melin  
Betty Moskov  
Rose Noshay  
Benjamin Owerbach  
Donna S. Pratt  
Helen Levitz Presberg  
Esther G. Robfogel  
Bernard Rosenberg  
Fanny Rosenthal  
Sanford Rothman  
Leonard S. Rubenstein  
Thekla Samuel  
Albert Schiffin  
Bernard Shapiro  
Selma Shertok  
Jennie Shoolman  
Isidor Siegel  
Ann Simon  
Harry A. Spector  
Meyer Stein  
Mitchell Trubitt  
Samuel Turk  
Bessie Weltman  
Josephine Wronker

SAVE THE  
DATE:

## Hazak Picnic

August 21st at  
Henrietta  
Veteran's  
Memorial Park

Watch for  
more info!



## SHABBAT SERVICES

<b>July 2014</b>	<b>Friday Evening 6:00 pm</b>	<b>Shabbat Morning 9:00 am</b>	<b>Conclusion of Shabbat</b>
<b>4th &amp; 5th</b>	Candle Lighting 8:36 pm	<b>Sidra: Balak</b>	Mincha: 8:05 pm Havdalah: 9:35 pm
<b>11th &amp; 12th</b>	Candle Lighting 8:33 pm Jammin Shabbat @ 6:00 pm Outdoor Potluck Dairy Supper to follow	<b>Sidra: Pinchas</b>	Mincha: 8:00 pm Havdalah: 9:32 pm
<b>18th &amp; 19th</b>	Candle Lighting 8:29 pm	<b>Sidra: Matot</b>	Mincha: 7:55 pm Havdalah: 9:27 pm
<b>25th &amp; 26th</b>	Candle Lighting 8:23 pm	<b>Sidra: Masei</b>	Mincha: 7:50 pm Havdalah: 9:21 pm

<b>August 2014</b>	<b>Friday Evening 6:00 pm</b>	<b>Shabbat Morning 9:00 am</b>	<b>Conclusion of Shabbat</b>
<b>1st &amp; 2nd</b>	Candle Lighting 8:15 pm	<b>Shabbat Chazon Sidra: Devarim</b>	Mincha: 7:40 pm Havdalah: 9:13 pm
<b>8th &amp; 9th</b>	Candle Lighting 8:06 pm	<b>Shabbat Nachamu Sidra: Va'etchanan</b>	Mincha: 7:30 pm Havdalah: 9:04 pm
<b>15th &amp; 16th</b>	Candle Lighting 7:56 pm	<b>Sidra: Eikev</b>	Mincha: 7:25 pm Havdalah: 8:54 pm
<b>22nd &amp; 23rd</b>	Candle Lighting 7:45 pm BBQ Dinner @ 6:00 pm Joint Shabbat with Temple B'rith Kodesh @ 7:00 pm	<b>Sidra: Re'eh</b>	Mincha: 7:10 pm Havdalah: 8:42 pm
<b>29th &amp; 30th</b>	Candle Lighting 7:34 pm	<b>Sidra: Shoftim</b>  Bat Mitzvah of Shira Silverstein	Mincha: 7:00 pm Havdalah: 8:31 pm



Temple Beth El  
139 Winton Road  
Rochester, NY 14610-2997

NON-PROFIT  
U.S. POSTAGE  
**PAID**  
ROCHESTER, NY  
PERMIT # 407

CHANGE SERVICE REQUESTED

DATED MATERIAL—PLEASE DELIVER PROMPTLY

---

**OFFICERS 2014-2015**

**DAN GLOWINSKY**

President

[TBEPrez@rochester.rr.com](mailto:TBEPrez@rochester.rr.com)

**CAROLINE KORN**

Vice President

**AMY LIBENSON**

Vice President

**LISA SILVERSTEIN**

Vice President

**MARC HAAS**

Treasurer

**SETH CHARATZ**

Secretary

**Leslie Crane**

Assistant Secretary

**ADMINISTRATIVE OFFICE  
HOURS**

Monday-Thursday 8:30 am - 5:00 pm

Friday 8:00 am - 3:00 pm

Sunday (during school year)

9:00 am - 12:00 pm

585.473.1770

**Anna Eckert**

Admin. Asst., Ext. 112

[aeckert@tberochester.org](mailto:aeckert@tberochester.org)

**Bonnie Harris**

Accounting, Ext. 117

[bharris@tberochester.org](mailto:bharris@tberochester.org)

**Carol Konuksever**

Reception/Admin. Asst., Ext. 110

[ckonuksever@tberochester.org](mailto:ckonuksever@tberochester.org)

**Vee Nelson**

Bookkeeping, Ext. 113

[vnelson@tberochester.org](mailto:vnelson@tberochester.org)

**Colleen Schaefer**

Admin. Asst., Ext. 119

[cschaefer@tberochester.org](mailto:cschaefer@tberochester.org)

**RELIGIOUS SCHOOL OFFICE**

Phone 585.473.1190

**Michelle Caron**

Administrative Assistant

[mcaron@tberochester.org](mailto:mcaron@tberochester.org)

**SENIOR STAFF**

**LEONARDO BITRAN**

Senior Rabbi

[lbitran@tberochester.org](mailto:lbitran@tberochester.org)

**MARTIN LEUBITZ**

Hazzan

[mleubitz@tberochester.org](mailto:mleubitz@tberochester.org)

**SARAH FREIDSON-KING**

Associate Rabbi

[sfreidson-king@tberochester.org](mailto:sfreidson-king@tberochester.org)

**DEBORAH ZEGER**

Executive Director

[dzeger@tberochester.org](mailto:dzeger@tberochester.org)

**SAMARA SOFIAN**

Director of Youth & Family Education

[ssofian@tberochester.org](mailto:ssofian@tberochester.org)

**RANDI FOX TABB**

Keshet Preschool Director

[rfoxtabb@tberochester.org](mailto:rfoxtabb@tberochester.org)