

Celebrating 100 Years

THE

Kol

VOL. 95 NO. 7
APRIL 2016
ADAR/NISAN 5776

Passover 2016

Please make plans to join our temple family for a kosher Passover Seder.

**Saturday, April 23rd
6:30 pm in the Auditorium**

Traditional Pesach foods

Our menu will include:

- Chicken & Matzo Ball Soup
- Roasted Chicken
- Brisket
- Kugel (Potato, Matzo or vegetable)
- Tzimmes
- Charoset
- Delicious Homemade Desserts

**Reservation for 2nd Seder:
April 23, 2016**

For Early Bird pricing, please reserve no later than Friday, April 8 in the Temple Office or register online at www.tberochester.org.

See inside for more Passover information.





Celebrating 100 Years

Mission Statement

Temple Beth El is a vibrant and inclusive community of Jews who join together for prayer, education, celebration, mutual support and comfort, tikkun olam and acts of loving kindness. We are guided by Torah and the principles of the Conservative movement. We are committed to our community, the State of Israel, and Jews around the world.

Vision Statement

Our vision is that Temple Beth El will be an inspiring center of Conservative Judaism in which meaningful experiences and memories take root and grow.

Values Statement

We are a welcoming and inclusive congregation.

We value and respect each congregant and his or her personal journey in Judaism.

We foster a sense of connectedness with our community.

We value participation in all aspects of synagogue and Jewish life.

Our congregation will be here for the entire Temple family now and for future generations.

Welcome to our house.

WEEKLY SERVICES

Shacharit:

Sunday: 8:30 am

Monday-Friday: 7:30 am

Rosh Hodesh: 7:15 am

Shabbat: 9:00 am

Secular Holidays: 8:30 am

Mincha/Ma'ariv:

Sunday-Friday: 6:00 pm

139 Winton Road South

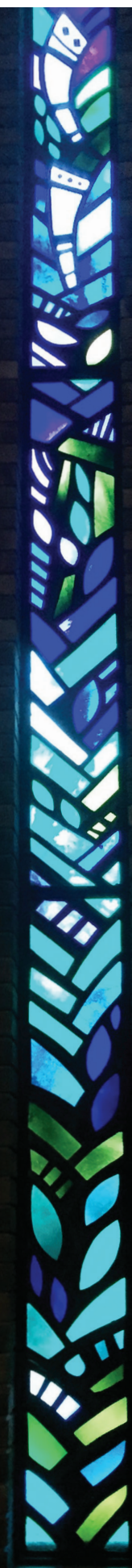
Rochester, NY 14610

Phone: 585-473-1770

tberochester.org

 **facebook.com/TBEROCH**

 **@tberochester**





GUESS WHO'S COMING TO SHABBAS?

An Exciting New Shabbat Program & You're Already Included!

DEBORAH GOLDMAN, CHAIR

"Guess Who's Coming to Shabbas," a program that partners congregants with one another for Shabbat dinners in their own homes, kicked off at Temple Beth El on Friday, November 6, 2015.

This program, which began in a suburban congregation outside Philadelphia, has two goals: To strengthen our synagogue community, and to help families build meaningful Jewish memories.

Our hope is to grow the program exponentially, with invited guests then serving as hosts in subsequent months, leading to 100% inclusion of our members by the end of a year. So don't be shy! Let us know if you can host or attend a dinner.

Guess Who's Coming to Shabbas future dates:

(Sign up form available at tberochester.org)

___ April 1, 2016 ___ May 6, 2016 ___ June 3, 2016

Questions? Contact Jessie Atkin at 473-1770 or jatkin@tberochester.org.



Reservation for 2nd Seder—April 23, 2016

For Early Bird pricing, please return this form no later than Friday, April 8 or register online at www.tberochester.org.

	TBE Member	Non-member	Names of all attending: _____
# Adults (13 years & older)	___ @ \$40	___ @ \$50	_____
# Kids' Meals (12 & younger)	___ @ \$10	___ @ \$15	_____
Maximum Cost per family household	___ @ \$100	___ @ \$135	Phone: _____ Email: _____
			Please seat us with: _____

			Allergies and Dietary restrictions: _____

PRICING AFTER APRIL 9:

	TBE Member	Non-member	Payment Information:
# Adults (13 years & older)	___ @ \$50	___ @ \$60	Name on Card: _____
# Kids' Meals (12 & younger)	___ @ \$15	___ @ \$20	Card # (mastercard, discover, and visa only): _____
Maximum Cost per family household	___ @ \$135	___ @ \$160	Exp. Date: _____ Sec. Code: _____
			Signature _____

Hurry! Make your reservations soon, Early Bird Pricing ends April 8. For additional information please call Carol Konuksever at 473-1770 or e-mail ckonuksever@tberochester.org



President's Message

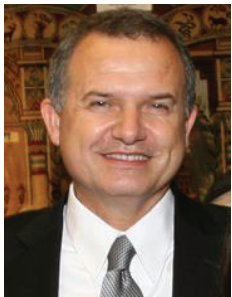
February was Jewish Disabilities Awareness Month and Temple Beth El participated by inviting distinguished community leaders to speak to us on each Shabbat during the month about various disabilities and how we in the Jewish community can help improve the Jewish lives of people with these disabilities. Dr. Carolyn Stern, a deaf family physician, spoke passionately about growing up deaf and inclusion issues affecting the deaf and hearing impaired Jewish community. Rabbi Michael Silbert spoke from the heart about raising autistic Jewish children from the perspective of being a Jewish parent and a Rabbi. And Emily Krohn, our Religious School Inclusion Specialist, chronicled all that has been accomplished by our Inclusion Team these past two years, and gave an overview of the work that still needs to be done.

As President of Temple Beth El, I have come to understand that the work of Inclusion falls into two broad categories: changing the way congregants think about people with disabilities, and providing the resources, both physical and programmatic, to make Temple Beth El more accessible. Put more succinctly it's about Minds and Money. Temple Beth El has made significant inroads in the first category. Most of us would agree that having the opportunity to enter into relationships with people who have disabilities, and seeing and hearing people with disabilities at our services and events makes TBE a better place, a place more in tune with our values. We have been less successful in finding the funds to make the physical and programmatic changes that we desperately need. Hearing loops, sign language interpreters, smaller teacher/student ratios, and accessibility renovations all come with a significant price tag.

The Torah teaches that we are all created, "b'zelem El'ohim", in God's image. If we truly believe that each and every Jewish person deserves a place in our Beth El community, then we need to find the money to turn that belief into a reality.

Dan Glowinsky, President

For highlights of the Minutes of the Board of Trustees Meeting, please go to tberochester.org.



From the Desk of the Senior Rabbi

Passover

The observance of Pesach involves an element, which is applicable not only to this festival, but to Jewish life generally and, indeed, to the nature of human existence.

Jewish law prohibits the use of bread and leaven products during Passover. The regulations are strict, you can check them out on our website; in essence, the smallest quantity of leaven renders food unfit for consumption. Why is a minute particle of *hametz* so potent that it can spoil a vast quantity of food? The answer, in general terms, is that this law emphasized the importance of little things in life, the details of human existence.

We live in a world, which pays tribute to size. We are addicted to bigness - bigger industries, bigger cars, king-size computer screens, and skyscrapers raise their heads higher into the heavens. Institutions grow increasingly larger. In our concern with bigness, we have confused it with greatness, mistaking quantity for quality and size for substance. The two nations of the ancient world that left the deepest impact on Western civilization were Jews and the Greeks. A cursory glance at a map indicates how small in size were the two countries whose influence is so enduring. David Lloyd George, British statesman who guided Britain and the British Empire through World War I and the postwar, said: "God has chosen little nations as the vessels by which God carries God's choicest wines to the lips of humanity, to rejoice their hearts, to exalt their vision, to strengthen their faith".

It is interesting to note that as we deal with materials, which are precious, the significance of little things becomes important in proportion to their value. In a ton of coal, for instance, a shortage of one or two lumps is unimportant. But when we deal with precious stones or volatile chemicals, every minute quantity becomes a matter of great concern.

In our relationship with human beings, the large things are generally placed in the focus of our attention. But the difference between cultured and crude people, politics aside, is to be found in little things: a few kind words, a gesture of esteem, a sympathetic clasp of the hand, a thoughtful remark, a pat on the shoulder—these are the gestures and signs which enable us to feel the warmth and friendship of another.

Rabbi Leonardo Bitran *To read more of Rabbi Bitran's' letter please go to: www.tberochester.org/senior-rabbi*



Notes From Our Hazzan. . .

Transcribed from remarks given March 6, 2016.

Good evening, Ladies and Gentlemen; Boys and Girls

Wow! This has been an amazing Shabbat and weekend! Before I go any further, there are a number of people that I must thank for what was, obviously a lot of hard work and a lot of time. To the chairs, Debi Brenner and Ellen Konar...a very special "Thank you!" for your coordination and oversight. To committee members : Henra Briskin, Josh Futerman, Shoshana Germanow, Dr. Leslie

Glowinsky, Anna Gossin, Shaina Kovalsky, Joseph Meyers, Merle Markus, Judy Azoff Musiker, Barb Schron, Suzanne Seldes, Dvora Shulman, Tammi Steinberg, Len Stein, Dr. Max Steiner, and Lisa Waltzer...I am so incredibly appreciative of all of your efforts!

To my dear colleagues, Rabbi Bitran, Debbie Zeger, Samara Sofian, Randi Fox Tabb...we have become quite the team! Thank you for not only your collegiality, but also for your friendship. To our officers, Dan Glowinsky, Caroline Korn, Amy Libenson, Lisa Silverstein, Marc Haas and Seth Charatz and to our Board of Trustees, who give so much time and effort to lead and guide our congregation.

To our staff, Michelle Caron, Jessie Atkin, Anna Eckert, Bonnie Harris, Carol Konuksever, Vee Nelson, and Tina Patterson...thank you so much for all that you do!

Hazzan Martin Leubitz *To read more of Hazzan Leubitz's letter please go to: www.tberochester.org/blog/notes-hazzan*





Religious School Corner

"Learning is great, because learning leads to action." – Talmud Kiddushim 40b

Providing our students with opportunities to do something with the knowledge that they are acquiring is an important element of our Religious School. It helps students feel that their learning has purpose, it gives them a sense of pride and accomplishment, and it provides them with a number of memories that they will draw upon as they solidify their Jewish identity. I'd like to share with you just a few highlights of ways that our Religious School is providing our students with opportunities to use what they are learning.

Learning to read Hebrew and to chant many of the prayers is a key component of our curriculum. Our students regularly get the opportunity to lead prayers that they are learning in our school T'fillah (prayer services) and our Shabbat family and youth services. The older students also prepare to lead these for the congregation in the main sanctuary.

Our Kitah Zayin (7th grade) students have a detailed unit on the Tallit and Tefilin. On Sunday mornings, they have the opportunity to wear these ritual items each week. As a demonstration of their learning, they created an instructional video teaching about Tefilin. This video was premiered at the World Wide Wrap on February 7 and is now hosted on the Beth El website as a resource.

Our Kitot Bet and Gimmel (2nd and 3rd grades) learn the values of helping others, feeding the hungry and translating our values into action. They joined together with students from Temples B'rith Kodesh and Sinai for a Mitzvah Day program at Foodlink. While there, they again studied the Jewish value of feeding the hungry and then participated in a food sort.

Our Kitot Dalet and Hay (4th and 5th grades) were tasked with preparing a Tu B'shevat program for the whole school. After studying the customs of the holiday, they created several activities for the other students. Not only did they create great activities, they had the opportunity to think about how they needed to adjust their activities to be appropriate for students younger and older.

These are just a few of the many examples of our students translating their learning into action. With these experiences as a part of their Jewish religious education, our students are learning how to apply their knowledge as they integrate themselves into their Jewish community. These experiences will stay with the students and will continue to be a source of pride.

B'Shalom,
Samara

USY - Sprinter Convention



Keshet

Watch us grow from babies to kids!

Enrolling now for camp - 7 weeks available
and school year 2016-2017!

Call 473-1190 for more information



Pitzel's

Gan Gadol

School registration

[www.tberochester.org/sites/default/files/
uploaded_documents/2016_registration_form2.pdf](http://www.tberochester.org/sites/default/files/uploaded_documents/2016_registration_form2.pdf)

Camp registration:

[www.tberochester.org/sites/default/files/
uploaded_documents/camp_keshet_2016_o.pdf](http://www.tberochester.org/sites/default/files/uploaded_documents/camp_keshet_2016_o.pdf)

Senior Relocation • Downsizing • Estate Sales

**Eliminate the stress of
downsizing, moving,
liquidating an estate or
selling a home.**

**Call Karen at
(585) 770-4404
for a FREE
consultation.**

It's your wealth.

Choose wisely.

The Rochester Group
Michael Amico, Michael H. Cooper and Philip J. DiPasquale
Financial Advisors

UBS Financial Services Inc.
400 Linden Oaks, Rochester, NY 14625
585-218-4565 800-462-1233

ubs.com/fs

SEZ Scott E. Zakalik, CPA, P.C.

Integrated Wealth Management SolutionsSM
Accounting | Taxes | Insurance | Investments* | Retirement

(585) 425-1040 solutions@sez-cpa.com
(585) 486-1234 www.sez-cpa.com

6605-W6 Pittsford-Palmyra Road | PO Box 180 | Fairport NY 14450

*Securities and investment advisory services offered through FSC Securities Corporation, Member FINRA/SIPC and a registered investment advisor. Scott E. Zakalik, CPA, P.C. is independent of FSC Securities Corporation.

Feldman
HEATING & COOLING

For over 95 years, the Feldman family has been providing quality, energy-saving heating & cooling.

585-288-2050
www.FeldmanHeating.com

Pinnacle
Investments, LLC

Caroline Korn
Senior Vice President, Financial Advisor
(585) 479-4071 Phone
(800) 982-0421
(315) 366-4413 Fax
CKorn@Pinnacle-LLC.com
www.pinnacleinvestments.com
160 Linden Oaks
Rochester, New York 14625

Member FINRA/SIPC

Passover



SERVICE TIMES DURING PASSOVER

FRIDAY, APRIL 22ND:

7:00 am, minyan followed by the Siyum Bechorim, festive meal, and burning of hametz.

SHABBAT & SUNDAY, APRIL 23RD & 24TH:

services at 9:00 am.

MONDAY THROUGH THURSDAY APRIL 25TH, 26TH, 27TH & 28TH:

morning minyan at 7:15 am.

FRIDAY, APRIL 29TH:

services at 9:00 am.

SHABBAT, APRIL 11TH:

services at 9:00 am and we have Yizkor.

PASSOVER INFORMATION

EREV PESAH SIYUM

The sunrise to sunset *ta'anit* (fast) *bekhorim* (of the firstborn), which occurs on the day before Passover, is the only fast that applies to just a segment of the community: all males who are the firstborn children in their families (if the firstborn child is female, the first son born after her is not obligated).

There is a widely practiced exemption: On the principle that fasting is prohibited on a joyous occasion, Judaism allows for anyone who attends a religious feast to forego fasting. It is customary to hold a celebratory meal on the completion of study of a tractate of rabbinic literature, called a *siyyum* (conclusion). So the sages initiated the practice of studying the end of a tractate after morning services on Erev Pesah followed by a celebratory meal.

At 7:00 am Friday, April 22nd, the firstborn in each family is invited to the Siyum B'khorim. Following the meal, there is an opportunity to burn your family's remaining hametz in a bonfire in the TBE Garden.

IS IT KOSHER FOR PASSOVER?

Passover has its own special rules of kashrut. On Pesah, Jews are forbidden from owning or consuming hametz (flour, food or drink made from the prohibited species of leavened grain: wheat, oats, barley, rye or spelt).

Most Ashkenazic authorities have added the following foods (*kitniyot*) to the above list: rice, corn, millet, legumes (beans and peas; however, string beans are permitted). The Committee on Jewish Law and Standards has ruled unanimously that peanuts and peanut oil are permissible. Sephardic authorities permit the use of all of the above *kitniyot*.

PERMITTED FOODS:

A. The following foods require no kosher l’Pesah label when purchased before or during Passover: fresh fruits and eggs, fresh fish (whole or gutted), fresh or frozen kosher meat other than chopped meat, whole (unground) spices and nuts, including whole or half pecans (not pieces), pure black, green, or white tea leaves or teabags, Nestea regular and decaffeinated unflavored tea, coffee (unflavored regular), baking soda and bicarbonate of soda.

B. The following items may be purchased before Pesah without a Pesah hekhsher but if bought during Pesah require a kosher l’Pesah label: white milk, 100% pure fruit juice, filleted fish, frozen fruit (with no additives), pure white sugar (with no additive), olive oil (extra virgin only), non-iodized salt, quinoa (with no additional ingredients).

C. The following products require reliable (“kosher l’Pesah”) certification (regular rabbinic supervision is not sufficient), whether purchased before or during Pesah: all baked goods (matzah, Pesah cakes, matzah flour, farfel, matzfel meal, and any other products containing matzoh), herbal teas, canned tuna, wine, vinegar, liquor, decaffeinated coffee and tea, dried fruits, oils, frozen uncooked vegetables and all frozen processed foods, candy, chocolate-flavored milk, ice-cream, yogurt, cheeses, butter, and soda. Any processed food bought during Pesah must have a (“kosher l’Pesah”) certification.

D. Any detergents, cleaners, etc. which are not a foodstuff and which are not eaten, may be used for Pesah and do not require a special label. These items include: isopropyl alcohol, aluminum products, ammonia, coffee filters, baby oil, powder and ointment, bleach, charcoal, candles, contact paper, plastic cutlery, laundry and dish detergent, fabric softener, oven cleaner, paper bags, plates, wax paper, plastic wrap, polish, sanitizers, scouring pads, stain remover, and bottled water with no additives.

E. Medicines: Prescription medicines are permitted. Non-prescription pills and capsules are permitted, for liquid medications, check with your rabbi.

For a more complete Passover guide prepared by the Rabbinical Assembly which includes guidelines for koshering a kitchen, please visit: rabbinicalassembly.org/pesah-guide.

BEDIKAT HAMETZ

One of the required holiday ceremonies is Bedikat Hametz, searching for leaven. On the night before the first seder, Thursday, April 21st, we conduct a candle-lit search through our home to ensure that no hametz is still present. It is a brief ceremony in which the entire family can and should participate.

1. Make sure that all hametz has been removed or locked away with the exception of what will be needed for the morning.
2. Carefully hide some crumbs of bread. This is to insure that the blessing and the ceremony will not be performed in vain.
3. Take a candle, a feather or brush, and a box or cloth for the crumbs, and recite this blessing:
Baruch Ata Adonai, Eloheynu Melekh haolam asher kidshanu b'mitzvotav v'tsivanu al biur hametz.
Blessed are You, Adonai our God, Ruler of the Universe, who has sanctified us with the commandments and commanded us to remove all leaven.
4. Perform the search and gather up all the crumbs. Tie them in a bundle which will be burned the next morning. Feel free to (safely) burn it on your own, or use the bonfire at Temple Beth El following morning minyan.
5. Recite the following: All manner of leaven which is in my possession, that I have not seen or removed shall be annulled and void of any ownership and considered as the dust of the earth. (The Aramaic for this can be found in the front of your Haggadah).
6. On Friday, April 22nd, at or before 10:00 am, burn the leaven and recite the formula below:
All manner of leaven which is in my possession, that I have seen or not seen, that I have removed or not removed, that I have destroyed or not destroyed shall be annulled and void of my ownership and considered as the dust of the earth. (The Aramaic for this can be found in the front of your Haggadah.)

Temple Beth El *Community* NEWS & EVENTS

Friday Night Jazz

May 13, 2016 6:00 pm
Featuring Gap Mangione

Led by Rabbi Leonardo Bitran & Hazzan Martin Leubitz
with the Friday Night Live musicians

Shabbat Dinner to follow

Adults (13 & older): member \$16 & non-member \$20
Children: member \$8 & non-member \$12
Maximum per Member Family Household: \$50

Prices increase \$5 per person & \$10 per member family April 25
RSVP to the Temple Office 585-473-1770 or online at tberochester.org



Centennial Celebration

September 18

Want to volunteer? Email - jatkin@tberochester.org. Committee Forming Now!
Co-chaired by Ilene Flaum and Sara Flaum Ressler



Save the Dates

Lunch and A Movie

Sponsored by TBE Sisterhood and Hazak

Wednesday, APRIL 6, 2016 at 12:00 noon

Join us for a wonderful dairy buffet lunch* followed by a screening of *Cupcakes* followed by a discussion guided by Elliot Fix, of Rochester Jewish Film Festival fame!

*\$10 per person

Call the TBE office at 473-1770 to make your reservation. Mail or bring your cash or checks payable to TBE Sisterhood.

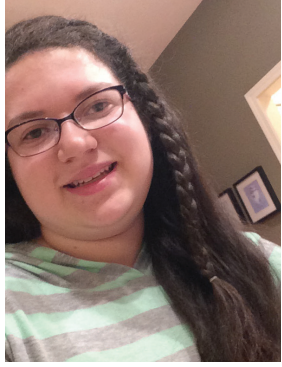
The Eastman School of Music Presents Holocaust Remembrance Concert: A Time to Remember

Sunday, May 1 - 7:30 pm | Kilbourn Hall

A concert of music by those who perished in or survived the camps, and music written in tribute to those who died, curated by Renee Jolles.

Tickets \$10 for general public, free to U/R ID holders. | Tickets available at the door. | Reception provided by TBE to follow.

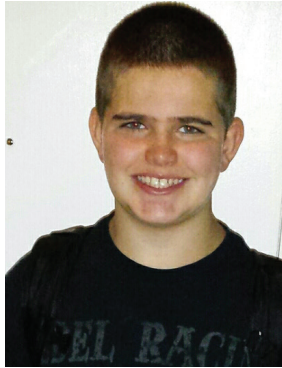
B'nai Mitzvah



Abigail Rose Goldberg

Bat Mitzvah Date: April 2, 2016
Parents: Rachel & Howard Goldberg
Siblings: Hannah & Lilly Goldberg
Grandparents: Joseph & Estelle Goldberg, Gary & Judy Budiansky

Abby is a 7th grader at Barker Road Middle School in Pittsford. She loves playing softball and spending time with her family and beloved kitties and foster kittens. Abby is looking forward to celebrating her Bat Mitzvah with family and friends and she is very thankful for the support from her family, Hazzan Leubitz, Rabbi Bitran and Moreh Gordon. Abby is excited about helping the Dmitri House with their mission to feed Rochester's hungry.



Brayden Mand

Bar Mitzvah Date: April 9, 2016
Parents: Danielle Mand & Scott Rogers
Siblings: Caleb Rogers
Grandparents: Iris & David Mand, Dianne & Dan Rogers

Brayden is a 7th grader at Twelve Corners Middle School. He loves spending time with his friends and family. He enjoys reading books and playing video games. He plays the tuba and has made it into the all-county band two years in a row. He is looking forward to celebrating his Bar Mitzvah with everyone.



Zoe Fleischer

Bat Mitzvah Date: April 16, 2016
Parent: Aaron Fleischer
Grandparents: Jennifer & Marc Fleischer

Zoe is a 7th grader at The Harley School. She is on the tennis team and enjoys playing guitar. Zoe has spent the last 5 summers at Camp Seneca Lake and is very excited to celebrate her Bat Mitzvah with her Camp Friends.

Mazal Tov

To **Shelley & Leonard Zwas**, on the birth of their grandson, Seth Zwas Cassara. And Mazal Tov to the parents, Rebecca & Michael Cassara and paternal grandparents, Judy & Ken Cassara.

To **Karen & Sy Zivan** on the birth of their great-grandson, Ilan Yehuda Zivan on February 24, 2016 in Israel. And Mazal Tov to the parents, Etan & Nili Zivan; grandparents, Karen & Bruce Zivan and great-grandparents, Susan & Ed Kopelowitz.

Kol HaKavod

To **Jill Eisenstein**, who has been named the Executive Director of the Rochester Regional Health Information Organization.



TBE Men's Club News

February was an eventful month for the TBE Men's Club. On Sunday, February 7, we had our annual "double feature." In the morning, after minyan, we hosted a breakfast and the World Wide Wrap, a program by our clergy for Religious School students – and their parents – about how to put on Tefillin. In the evening, we enjoyed a "Mediterranean" Super Bowl Party, featuring falafel and pizza hand made by chef Jeff Stolberg. February 27 was Men's Club Shabbat, when we give the Rabbi and Hazzan the morning off and conduct Shabbat services ourselves.

For information on future programs, check the TBE website (www.tberochester.org), the Kol, flyers in the synagogue, or call the office at (585) 473-1770.

If you're already a member of the Men's Club, thanks! If not, join us! Your modest membership dues (\$36.00) help us provide these programs and other services for the TBE community and Religious School.

Special Breakfast Program Sunday, April 17 at 9:30 am co-sponsored by Hazak

"The Story of Ellis Island"

presented by Dr. Adam Urbanski
President of the Rochester Teachers Association (RTA)

Today it's one of the most visited tourist spots in New York City, but for so many decades Ellis Island was the "first stop" for most immigrants to America.

Dr. Urbanski, himself a Polish immigrant who came to the U.S. in 1960 and is now a distinguished, much honored academic, will discuss the history of this legendary location in an informative, humorous, and moving presentation.

Hot Breakfast Buffet: 9:30 am | Program: 10:15 am
Everyone is invited.

RSVPs appreciated:
email scrosenz@juno.com



Jewish Community Golf League

Champion Hills Golf Club
Victor, New York
16 Weeks of Play plus Banquet and Prizes

Wednesday Nights
Tee times start at 5:18 pm
2 or 3 person teams
(2 team members play each week)

\$900/team – 2 person team
\$960/team – 3 person team
(Price includes golf, cart, banquet & prizes)

Recorded GHIN Handicap –
\$40 Per Player (Optional)

\$36 Men's Club Fee Per Player
(If you are not currently a Men's Club Member)

Pay Half by May 1
Balance Due by July 1
Handicap Match: May 11
Match Play: May 18 through August 24

For More Information Contact
Evan Spindelman: evans@lombardcecil.com
Frank Karbel: frank.karbel@gmail.com
Openings remain!

Sisterhood Calendar

APRIL 2016

- 9 Sisterhood Book Club *
- 6 Lunch and a Movie w/Hazak *
- 11 Rosh Chodesh Nisan, 7 pm Board Rm *
- 19 Knitting Circle, 2 pm Beit Café
- 23 Pesach- Seder 1

MAY 2016

- 9 Rosh Chodesh Iyar, 7 pm Board Room
- 15 Board Meeting
- 17 Knitting Circle, 2 pm Beit Cafe

* see did you know



Temple Beth El Centennial Cookbook Be in the Mix!

Everyone in our Temple family is invited to be in our cookbook. Share your recipes with family and friends. Submit at least 3-5 of your favorite recipes to make sure you are well represented.

There are two ways to submit recipes:

Send us a written copy. Include your name, phone number and email, in case we have questions. Mail them to Sisterhood, at the temple address.

Or, enter them directly on-line. Go to www.typensave.com. Log in, with user name TBESist, and password salt625. Follow the directions. It's easy!



Questions or problems?
Contact Cookbook Committee
Chair Gail Finkelstein at
585-473-6855, or
gailfink49@gmail.com.

DID YOU KNOW.....

****ROSH HODESH NISAN** Join Silvana Bacman on April 11 from 1-2:30 pm in a discussion about Ashkenazic and Sephardic Jews in South America. We will meet in the Garden Room.

****SHIVA HELP BOX** Temple Beth El Sisterhood hopes to provide a small measure of comfort, by making this time a little easier for bereaved family members who will be "sitting shiva" in the Rochester area. Sisterhood's new project, the SHIVA HELP BOX, is a collection of items that may be of use at this time. As Sisterhood learns of a loss suffered by a member of our congregation, and that the bereaved will sit shiva in Rochester, we will contact the bereaved family. We will offer our condolences, and offer the box to the shiva house with our hope that it makes things a bit easier.

****SCHOLARSHIP AVAILABLE** TBE Sisterhood offers need-based financial assistance to help offset the costs of an Israel immersion program, which is defined as a teen trip of at least 10 days that is organized by a Jewish organization or an institution of higher education and designed to teach teens about Israel's history, current events, geography and culture. Scholarships are available to all pre-college students or college students. Applications available in the School Office.

Save The Date

Sisterhood Spring Book Club
Wednesday, June 8, 2016

We will be reading *The Marriage Of Opposites*,
by Alice Hoffman



TO SELL YOUR HAMETZ

The Torah prohibits the ownership of hametz (flour, food or drink made from the prohibited species of leavened grain: wheat, oats, barley, rye or spelt) during Pesah. Ideally we burn or remove all hametz from our premises which may be effected by donations to a local food pantry. In some cases, however, this would cause prohibitive financial loss. In such cases, we arrange for the sale of the hametz to a non-Jew and its repurchase after Pesah. You can arrange for this sale of your Hametz by sending the following form to Rabbi Bitran at the Temple office **no later than Wednesday, April 27th, 2016.**

It is customary to include a donation to provide Maot Hittin funds for Passover supplies for the needy. Please make checks payable to Temple Beth El which will contribute to Maot Hittin on everyone's behalf.

Dear Rabbi Bitran:

Please act as my agent for this sale of any hametz on my premises.

Name _____

Volunteer with RAIHN!

(Rochester Area Interfaith Hospitality Network)

A huge THANK YOU to our volunteers who came together for two days during our February rotation (one of our biggest turnouts yet!) AND helped out at the RAIHN Day Center rotation week at the end of February. Your kindness and generosity was very much appreciated!

Our next RAIHN rotation will be in mid-May—stay tuned for details! We are looking for caring people to cook dinner, host dinner, and participate in afternoon and evening activities with RAIHN families. New volunteers require no training, and we ask only that people donate their time with family (kids welcome!) or friends.

RAIHN is a not-for-profit, interfaith organization that assists homeless families to achieve sustainable independence by supporting them with tailored services including shelter, food, personalized case management, and a diverse network of caring volunteers.

It's a perfect time to get involved NOW! For sign up information and to get onto our volunteer email list, please contact Lauren Hosek at (303-489-6566) or lrhosek@gmail.com

Tikkun Olam

Help prepare and serve lunch at Asbury Dining & Caring Center! Asbury is a place where anyone who is in need may receive a hot, nutritious meal and other support, such as help finding jobs, apartments, and counseling. Our next upcoming date is upcoming Sunday, May 22. Set-up time is between 10:30 am and noon, and serving times run between 11:30 am and 1:30 pm. If you are able to help, please contact Carol Konuksever to sign up (ckonuksever@tberochester.org or 473-1770).

Todah Rabbah Contributions* to Temple Beth El Funds That Are Worth Menschen-ing

Every contribution to a Temple Beth El Fund is worth menschening. However, we can only publish those that are \$10 or more. The contributions listed were received between February 2 and March 1, 2016. If your contribution is not listed, please call the TBE Office, we will correct it in the next KOL issue.

AARON GABAY CHILDREN'S GARDEN FUND

Donation

Carol and Aubey Dankner

For the Yahrzeit of Al Davis

Susan Hollenberg

For the Yahrzeit of Clara Rind

Gabriela and Samuel Rind

For the Yahrzeit of Selma Sweet

Rona Stein

In memory of Ines Baranes

Shelly and Shlomo Gabay

For the Yahrzeit of Grete Berkowitz

Gabriela and Sam Rind

BUILDING FUND

Donation

Marjorie and Julian Goldstein

CAPITAL CAMPAIGN FUND

For the Yahrzeit of Pinchas Futerman

Sara Futerman

For the Yahrzeit of Dina Wizenfeld

Sara Futerman

EARL GOLDSTEIN TORAH MEMORIAL FUND

For the Yahrzeit of Abraham Elkin

Marlene and Ross Elkin

For the Yahrzeit of Ethel Feld

Marilyn Salit

For the Yahrzeit of Earl Goldstein

Alan Goldstein

For the Yahrzeit of Sarah Shayne

Michelle Shayne

In honor of Theodore Dov Goldstein, our new grandson

Mary and Alan Goldstein

In memory of Bernie Levinson

Marilyn Salit

GENERAL FUND

Donation

Harry Davidson

For the Yahrzeit of Renee Tylim Eck

Perry Eck

For the Yahrzeit of Aleksey Eydelshiteyn

Raisa Fayerberg

For the Yahrzeit of Bella Falkovich

David Falkovich

For the Yahrzeit of Hannah Glazer

Jeanette Goldstein

For the Yahrzeit of Kopyl Goldberg

Raisa Goldberg

For the Yahrzeit of Pesya Goldberg

Raisa Goldberg

For the Yahrzeit of Rachie Goldberg

Raisa Goldberg

For the Yahrzeit of Sarrah Goldberg

Raisa Goldberg

For the Yahrzeit of Semion Goldberg

Raisa Goldberg

For the Yahrzeit of David Goldstein

Marjorie and Julian Goldstein

For the Yahrzeit of Sophie Goldstein

William Goldstein

For the Yahrzeit of Samuel Kolko

Anne Korenstein

For the Yahrzeit of Isadore J. Korenstein

Anne Korenstein

For the Yahrzeit of Max Korenstein

Anne Korenstein

For the Yahrzeit of Fritz Krebs

Irving Krebs

For the Yahrzeit of Evelyn Krovetz

Jeanette Goldstein

For the Yahrzeit of Leah Mann

Eva Mann

For the Yahrzeit of Nathan Rickless

Marjorie and Julian Goldstein

For the Yahrzeit of Rosalie Russ

Lana and Gerald Russ

For the Yahrzeit of Anna Schrier

Naomi and David Schrier

For the Yahrzeit of Evelyn Scull

Wendy and Jack Scull

For the Yahrzeit of S. Howard Sundell

Stephen Sundell

For the Yahrzeit of Shaye Tsvasman

Raisa Goldberg

In honor of David Feldman's Golden Bar Mitzvah

Deborah and John Gallant

In honor of Sandy Karbel's engagement

Deborah and John Gallant

In honor of Millie and Morry Natal's

anniversary

Selma & Michael Berger

In memory of Harriet Lempert

Donna Golden, Mark & Marsha Lempert

In memory of Edward Maymin

Yelena Maymin

In memory of Toby Feuerstein Piersman

Helen & Charles Feuerstein

In memory of Norman Schiffrin

Muriel Steinberg

Mazal Tov to Gail Drew on the birth of her granddaughter, Abigail Marie Drew

Sharon Kovalsky

HALPERN CANTORIAL CONCERT FUND

In honor of Debbie Waltzer's special birthday

Marla and Mike Miller

HAZZAN'S DISCRETIONARY FUND

For the Yahrzeit of Hyman M. Cohen

Shirley Fagenbaum

For the Yahrzeit of Esther Eisenberg

David Eisenberg

For the Yahrzeit of Lina Gray

Dolores Schwartz

For the Yahrzeit of Albert Kasdin

Lisa Kasdin

Phyllis Kasdin

For the Yahrzeit of Herschel Kravetz

Phyllis & Sandy Kravetz

For the Yahrzeit of Simon Margolis

Seymour Margolis

For the Yahrzeit of Evelyn Scull

Seymour Margolis

In honor of Barbara & Irving Cohen's

64th Anniversary

Barbara and Irving Cohen

In honor of Hazzan Leubitz and all he does for us

Barbara and Chuck Freeman

In honor of Hazzan Leubitz's 20th

anniversary at TBE

Molla and Ralph Carr

Marlene and Ross Elkin

Shirley Fagenbaum

Deborah and John Gallant

Essie Germanow

Jill and Sam Katz

Ruth and Gene Salesin

Dolores Schwartz

In memory of Fannie "Faye" Boyar

Marilyn and Irving Manis

In memory of Eugenia Ruderman

Sara Ruderman

In memory of Irving Ruderman

Sara Ruderman

In memory of Florence Salitan

Bonita Moseley

Carol and Bruce Thiell

HS DISCRETIONARY FUND

For the Yahrzeit of Lea Grunspan

Zipporah Kleinberg

In honor of Shayna Pavsner

Zipporah and Marvin Kleinberg

KIDDUSH FUND

For the Yahrzeit of David Litvak

Larisa Vaynshteyn

For the Yahrzeit of Paul Schweid

Marla and Michael Allentoff

In honor of Michael Bernstein

Eileen and Michael Grossman

Mazal Tov to Debi & Ralph Brenner on the

birth of their granddaughter, Shayna Pavsner

Judy Azoff Musiker & Malcolm Musiker

L D SCHACHT MINYAN/CHAPEL FUND

For the Yahrzeit of A. Bernard Axelrod

Rachel and Stuart Axelrod

For the Yahrzeit of T'Mahry Axelrod

Rachel and Stuart Axelrod

For the Yahrzeit of Abraham Beckerman

Murray Beckerman

For the Yahrzeit of Merton Goldstein

Bunny Goldstein

For the Yahrzeit of Esther Levy

Rachel and Stuart Axelrod

For the Yahrzeit of Harvey Levy

Rachel and Stuart Axelrod

For the Yahrzeit of Tracy Rose Lichtenstein

Bunny Goldstein

For the Yahrzeit of Julius Patiky

Elaine Patiky

In memory of Harriet Lempert

Bunny Goldstein

MUSEUM FUND

For the Yahrzeit of Annie Newman

Wilfred Newman

NEIL NORRY MEMORIAL CAMBERSHIP FUND

For the Yahrzeit of Charlotte B. Cohen

Louise Epstein

For the Yahrzeit of Morris Heicklen

Robert Heicklen

For the Yahrzeit of Celia Lapides

Samuel Katz

For the Yahrzeit of Minnie Norwitch

Samuel Katz

PRAYER BOOK FUND

Mazal Tov to Carrie & Robert Gurell on the

birth of their daughter, Piper Melann

Chavurah Shelanu

PRESIDENT'S DISCRETIONARY FUND

In memory of Bernice Cornell

Marcie and Joel Shapiro & Family

RICHARD W. BRISKIN CANTOR-IN-RESIDENCE FUND

For the Yahrzeit of Lillian Briskin

Henra Briskin

For the Yahrzeit of Samuel Caro

Beatrice Roxin

For the Yahrzeit of Harry J. Cohen

Adell Crane Ornstein & Alvin Ornstein

For the Yahrzeit of Anne Copeland

Adell Crane Ornstein & Alvin Ornstein

For the Yahrzeit of Gilbert Crane

Adell Crane Ornstein & Alvin Ornstein

For the Yahrzeit of Melvin Fernandez

Judy and Allan Schwartz

In honor of Richard W. Briskin weekend

Sorina Goldstein

In memory of Sally Lerner David

Phyllis and Bernie Natal

In memory of Richard Packard

Henra Briskin

RABBI BITRAN'S DISCRETIONARY FUND

Donation

Harriet and Jack Kurz

Suzanne Sefton-Silver & Seth Silver

For the Yahrzeit of Martin Azoff

Judy Azoff Musiker & Malcolm Musiker

For the Yahrzeit of Charles H. Kroll

Helene Kroll Gupp

For the Yahrzeit of Dr. Harvey Phillips

Michael Phillips

In honor of Jill Eisenstein on her new position

Judy Azoff Musiker & Malcolm Musiker

In memory of Therese Becker

Eileen and Michael Grossman

In memory of Edith Manoff

Frances Neurock

SCHOLARSHIP FUND

For the Yahrzeit of Daniel Chazanoff

Nina Chazanoff

For the Yahrzeit of Ida Glassman

Joanne Prives

For the Yahrzeit of Minnie Lewis

The Saat Family

For the Yahrzeit of Richard Newman Price

Valerie Price Ciufu & Philip Ciufu

In honor of Shira Presberg - wonderful Bat

Mitzvah rendering

Joanne Prives

SHULMAN CHILDREN'S MUSIC FUND

For the Yahrzeit of Mildred Abel Jaschik

Suzanne and Nathan Jaschik

In honor of Deb Waltzer's birthday

Martha Green

SIDNEY LEVINSON YOUTH MEMORIAL FUND

For the Yahrzeit of Anna Bloch

Carolyn Nitzberg

WEINTRAUB MEMORIAL FUND

For the speedy recovery of

Sandy Kinel Bernhard

Barbara and Martin Lipsky

For the Yahrzeit of Joseph (Yuss) Freeman

Barbara and Chuck Freeman

For the Yahrzeit of Gerson Kahn

Barbara Lipsky

For the Yahrzeit of Evelyn Scull

Dorothy Silver

In memory of Diane Lipsky

Barbara and Martin Lipsky

Condolences

We record with sorrow the passing of:

Fannie Boyar, z'l

Mother of Charles (Alene) Boyar; grandmother of Marialena Young, Simeon Boyar & Thea Boyar; great-grandmother of Jordan, Hunter & Kira Young & Mia Henchi Boyar.

Harriet B. Lempert, z'l

Mother of Mark (Marsha) Lempert & Donna (Donald) Golden; grandmother of Benjamin Golden.

Morris J. Shapiro, z'l

Father of Donna Shapiro & Barbara Fiorucci; grandfather of Jessica, Kate and Marissa.

May their souls be bound up in the bond of life.

YAHREZEITS... Dates are determined according to the Hebrew calendar. The names will be listed in the Shabbat program booklet on the date listed.

April 2

Sam Brodsky
Milton Chernick
Fay Clonick
Zelda Cowan
Rose Eichenbaum
Jack Freeman
Rita Friedman
Yeva Girin
Dorothy Shames Kaplan
Goldie Kleinberg
Morris Kowal
Hyman Kravetz
Cynthia Mashioff
Sidney Irvin Nusbaum
Jacob Rappaport
Mildred Rosenberg
Ida Wronker Rosenbloom
Pearl Rosenbloom
Cecil Schwartz
Florence P. Schwartz
Sonia Sherizen
Virginia Shoolman
Rose Sloan
Sam Wasserman
Melvin G. Wheeler
Morris Wolf

Scott Nathan LaBaer

Ruth P. Lansky
David Lasky
Harold Lazeroff
Sol Lepson
Julia Levy
Mary G. Lewis
Adolph W. Lieberman
Barbara Mand
Celia Bestry Manson
Harry Manson
Samuel Marcusfield
Isaak Mechtovich
Harvey Meyers
Albert L. Morris
Therese Mtono
Lester Pies
Sanford Alan Pollock
Sarah Porush
Doris Raffelson
Udiph Rappaport
Florence Rosen
Paul I. Roxin
Edward Salmon
Celia Harris Sanow
Dorothy Sanow
Levy Schneider
Ida Gordon Sheinfeld
Arsh Shvartsberg
Benjamin Smith
Alexander Stark
Esther Stein
Anna Gissin Stolnitz
Dorothy Alexander Sugarman

Gertrude Swartz
Victor Weinthrop
Estelle Weiser
Henry Weitz
Sharon Wexler
Zipporah R. Zaidel
Roza Zinger

April 16

Lorraine S. Barnet
Annie Brody
Yetta Brown
Franz Bustin
Samuel Chazan
Naum Chizhik
Lester L. Cohen
Louis Cohen
Leon Falkoff
Sidney S. Fine
Helen F. Flatow
Gretel Frank
Joseph Gastel
Else Goldfarb
Isadore Goldman
Sophia Goldstein
Leah Gordon
Paula Harwood
Fanny Hochman
Ephraim J. Kauffman
Abraham Korpeck
Sylvia Kowal
Benjamin Krieger

Idelle Krieger
Samuel Lipchitz
Evelyn G. Lipson
Jerome L. Lubin
Yakov Makhnovskiy
Gertrude Mann
Lillian Markus
Rose Morgenstern
Arthur Osband
Jean Patiky
Celia Peck
Edward Pinsky
Henry Rosenbloom
Etta Rotenberg
Baya Rozidor
Sidney Rubin
Joel I. Rudolph
Adele Salz
Lee David Schacht
Dora Schaft
Nathan Schooler
Ida Schwartz
Joseph Shapiro
Leah Siegel
Louis Siegel
Herbert E. Sim
Harry Simon
Zelma Smith
Joseph Sweedler
Chaya Noya Tubman
Ann Yungelson

April 23

Gertrude R. Alderman
Leah Begun Allyn
Louis Belkin
Lena K. Bolsky
Bessie Bracker
Paul H. Braverman
Mildred Buff
Louis Carr
Esther Cohen
Lester Cohen
Minnie B. Cohen
Beatrice Diamond
Rebecca Diamond
Simon Diamond
Bessie P. Drexler
Leah Dushay
Edward Elkins
Milton Ergas
Reysl Fayerberg
Marcia Feltman
Edith Freed
Joseph Fritt
Gesya Gelman
Julius H. Goldberg
Yosif Gordin
Ruth Green
Matilda Greenstine
Sam Gwirtzman
Nathan D. Hershenhorn
Bessie Hirst
Emanuel Kahn
Jeanette Kaplan
Morris Kosoff
Lisa Beth Krieger

Sol Landsman
Wolf B Lasker
Stanley L. Levinson
Loretta Manning
Georgiy Maymin
Frieda E. Meislin
Eduard Melder
Rebecca Morris
Ralph Munzner
Isadore Newman
Anne Perlman
Robert Pollan
Leon Posen
Samuel Poze
Bess Raskind
Harold Rosenbaum
Joseph Rosenthal
Yetta Sacks
Rhea Sadick
Julia M. Shapiro
Ralph Shapiro
Joseph Simon
Carol Strauss
Hyman Swartz
Mary Tabachnick
Shlomo Tubman
Alex Vaksman
Paula Ann Victor
Minnie Weiss
Mollie L. Wronker
Samuel Yates
Florence B. York
Bronya Zatz
Regina Zeger

April 30

Betty Alpert
Leyka Berenshteyn
Arthur Blumenthal
Louis Bracker
Donald Brandt
Isidor Harry Bush
Lesser Byer
Benjamin Cantor
Arnold Cohen
Morris H. Cohen
Beatriz Pinzon De Wohlgenuth
Rose L. Deutsch
Allan Dinaburg
Garson Dinaburg
Morton M. Feldman
William Gelb
Sylvia G. Gertzog
Rose Ginsberg
Jack Gold
Samuel Goldstein
Nelson M. Gorin
Miriam G. Gould
Henry L. Hagelberg
Rose Herzog
Myer Hormats
Lasser Itkin
Rita W. Jacobs
Minnie Jassenoff
Leah E. Kaplan
David Kass
Nathan Katz

Florence Kingsley
David M. Klein
Lillian Panner Klein
Arthur Lazoff
Lena Lewinson
Nehama Makhnovskaya
Josiah Manis
Gottlieb Mann
Eva Goldberg Marder
Fred R. Mayer
Abraham Melter
Lawrence Meyers
Lisabeth "Liz" Michael
Cecelia Nedvedovich
Elizabeth Phillips
Ruth C. Pincus
Baruch Reitzfeld
Lea Reitzfeld
Mendel Reitzfeld
Nathan Relin
Leon S. Rosen
Muriel L. Rosenberg
David Rosenfield
Ada Shavlan Rosenstein
David B Rosenthal
Sara Rubenstein
Harold Rubin
Isadore Ruderman
Fannie Schaffer
Leopold Schafheimer
Josef Schiff
Lewis Schultz
Frank Shames
Khaim Shandalov
Hyman Shapiro
Mania H. Shorr
Jean Solomon
Ann R. Spiller
Samuel B. Spiller
Feiga Spivak
Nathan Tyser
Philip Ugol
Yaakov Vigoda
Josef Weinthal
Golda Widawski
Simcha Binem Widawski
Fraya Arlene Wildman
Lorraine Yules
Rose Zakofsky

Events Calendar

APRIL						
SUNDAY	MONDAY	TUESDAY	WEDNESDAY	THURSDAY	FRIDAY	SATURDAY
					1	2 L'Chaim 8:45 am Family Service 10:30 am
3	4	5	6 Sisterhood Lunch & Movie 12 pm	7 Torah Study 12 pm	8 Tot Shabbat 5:30 pm	9 L'Chaim 8:45 am
10	11 Sisterhood Rosh Hodesh 7 pm	12	13	14 Torah Study 12 pm	15 Simcha Service 6 pm	16 L'Chaim 8:45 am Parashat HaShavua 10:00 am Kehilat Yeladim 10:30 am
17 Men's Club Breakfast 9:30 am	18	19 Sisterhood Knitting Circle 2 pm	20	21 Torah Study 12 pm	22 Erev Passover	23 1st Day Passover Second Seder 7 pm
24 2nd Day Passover	25	26	27	28 Torah Study 12 pm	29 7th Day Passover	30 8th Day Passover Yizkor

COMING UP IN MAY:

- 5/2 Men's Club Board Meeting; 7 pm
- 5/5 Torah Study; 12 pm
- 5/6 Keshet Mother's Day Celebration; 11 am
Guess Who's Coming to Shabbas?
- 5/7 L'Chaim; 8:45 am

Shabbat Services

APRIL 2016	FRIDAY EVENING 6 PM	SHABBAT MORNING 9 AM	CONCLUSION OF SHABBAT
1 & 2	Candle Lighting: 7:19 pm	Shabbat Parah Sidra: Shemini Bat Mitzvah of Abigail Goldberg	Mincha: 6:50 pm Havdalah: 8:21 pm
8 & 9	Candle Lighting: 7:28 pm Tot Shabbat: 5:30 pm	Shabbat Hachodesh Sidra: Tazria Bar Mitzvah of Brayden Mand	Mincha: 7:00 pm Havdalah: 8:29 pm
15 & 16	Candle Lighting: 7:36 pm Simcha Service: 6:00 pm	Shabbat Hagadol Sidra: Metzora Bat Mitzvah of Zoe Fleischer Parashat HaShavua: 10:00 am Pastoral Conference Room Kehilat Yeladim: 10:30 am Chapel	Mincha: 7:05 pm Havdalah: 8:37 pm
22 & 23	Candle Lighting: 7:44 pm Erev Passover	Passover – 1st Day 2nd Seder 6:30 pm Auditorium	Mincha: 7:15 pm Havdalah: 8:48 pm
29 & 30	Candle Lighting: 7:52 pm Passover	Passover – 8th Day Yizkor	Mincha: 7:20 pm Havdalah: 8:53 pm

Establishing a New Tradition





BRIGHTON MEMORIAL CHAPEL, INC.
Rochester's Jewish Funeral Home
 Graveside, Temple or Chapel Services.
 Now maintaining the PARSKY records

427-8520
 3325 Winton Road South
www.BrightonMemorialChapel.com

RE/MAX[®]
 Realty Group

Proven Performance with...

Ira Jevotovsky
 Licensed Real Estate Associate
 Call: 585-389-1029
 Cell 230-1187
 Email: jevoi@rochester.rr.com
www.SoldByIra.com
Ira understands your family's needs


or


Before

After



139 Winton Road South
Rochester, NY 14610

CHANGE SERVICE REQUESTED

DATED MATERIAL—PLEASE DELIVER PROMPTLY

SENIOR STAFF

Leonardo Bitran
Senior Rabbi
lbitran@tberochester.org

Martin Leubitz
Hazzan
mleubitz@tberochester.org

Deborah Zeger
Executive Director
dzeger@tberochester.org

Samara Sofian
Director of Youth &
Family Education
ssofian@tberochester.org

Randi Fox Tabb
Keshet Preschool Director
rfoxtabb@tberochester.org

OFFICERS 2015-2016

Dan Glowinsky
President
TBEPrez@tberochester.org

Caroline Korn
Vice President

Amy Libenson
Vice President

Lisa Silverstein
Vice President

Marc Haas
Treasurer

Seth Charatz
Secretary

ADMINISTRATIVE OFFICE HOURS

Monday-Thursday 8:30 am–5:00 pm
Friday 8:00 am–3:00 pm
Sunday (during school year) 9:00 am–12:00 pm
585.473.1770

Jessie Atkin
Marketing, Programming,
Volunteer Coordinator, Ext. 115
jatkin@tberochester.org

Anna Eckert
Admin. Asst., Ext. 112
aeckert@tberochester.org

Bonnie Harris
Accounting, Ext. 117
bharris@tberochester.org

Carol Konuksever
Reception/Admin. Asst., Ext. 110
ckonuksever@tberochester.org

Vee Nelson
Bookkeeping, Ext. 113
vnelson@tberochester.org

Tina Patterson
Admin. Asst., Ext. 119
tpatterson@tberochester.org

Joe Samluk
Head Custodian Ext. 129

RELIGIOUS SCHOOL OFFICE

Phone 585.473.1190

Michelle Caron
Administrative Assistant
mcaron@tberochester.org